



CITY OF CLEVELAND  
Mayor Justin M. Bibb

2026 City of Cleveland

# Landmarks Commission

---

Julie Trott, Commission Chair  
Daniel Musson, Secretary





CITY OF CLEVELAND  
Mayor Justin M. Bibb

# Certificates of Appropriateness

---



# Case 26-028

Certificate of Appropriateness

Ohio City Historic District

## 3020 Carroll Avenue

### Siding Replacement

Project Representatives: Tara Toolis and Stefan Mendrea, Forest City  
Builder Group; Aaron Jacobson, Owner  
Ward 7: Councilmember Davis

Tabled MM/DD/YYYY or  
Schematic Review  
completed MM/DD/YYYY



# Design Concept

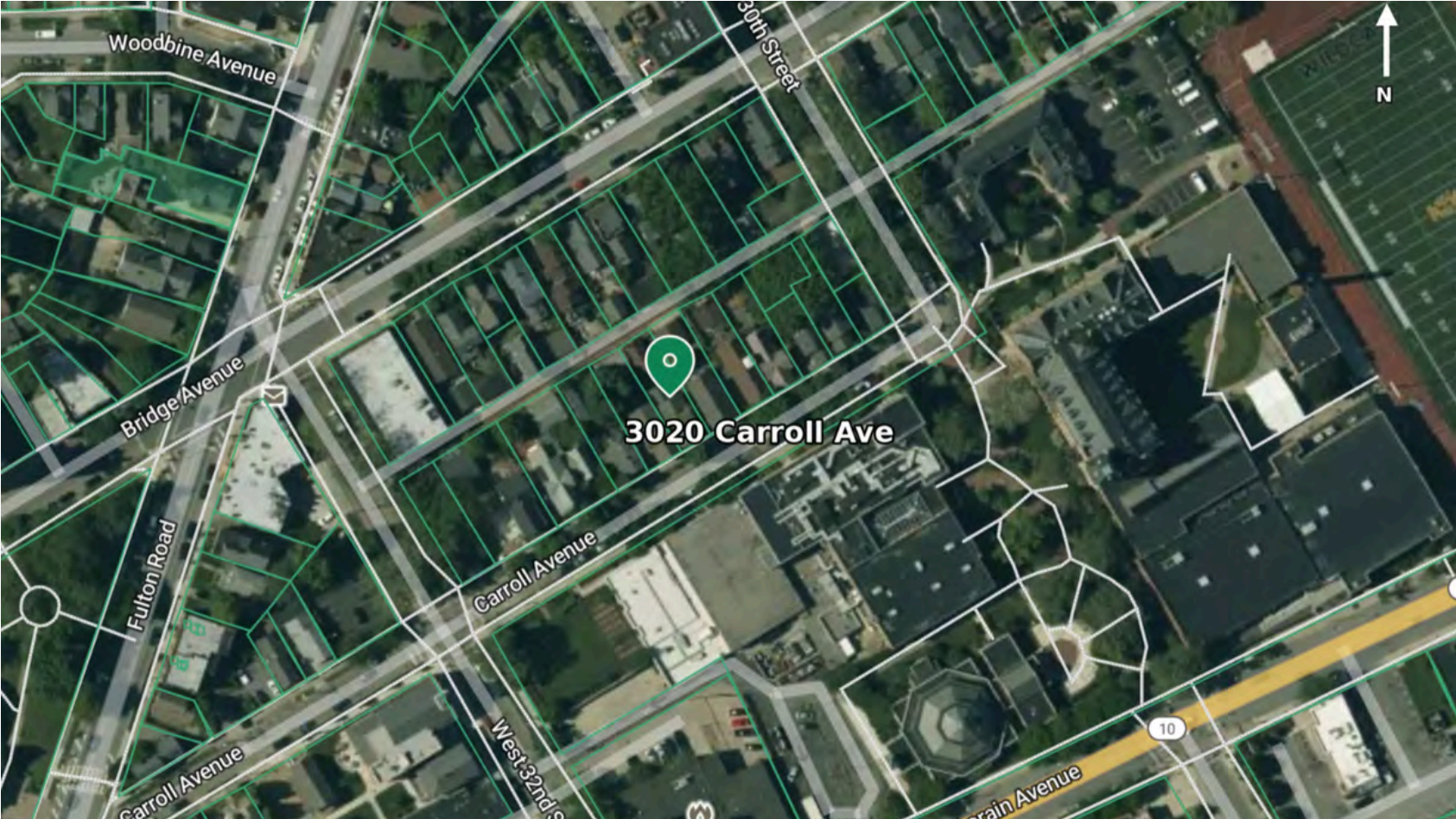
Jacobson Project



3020 Carroll Ave. Cleveland, OH

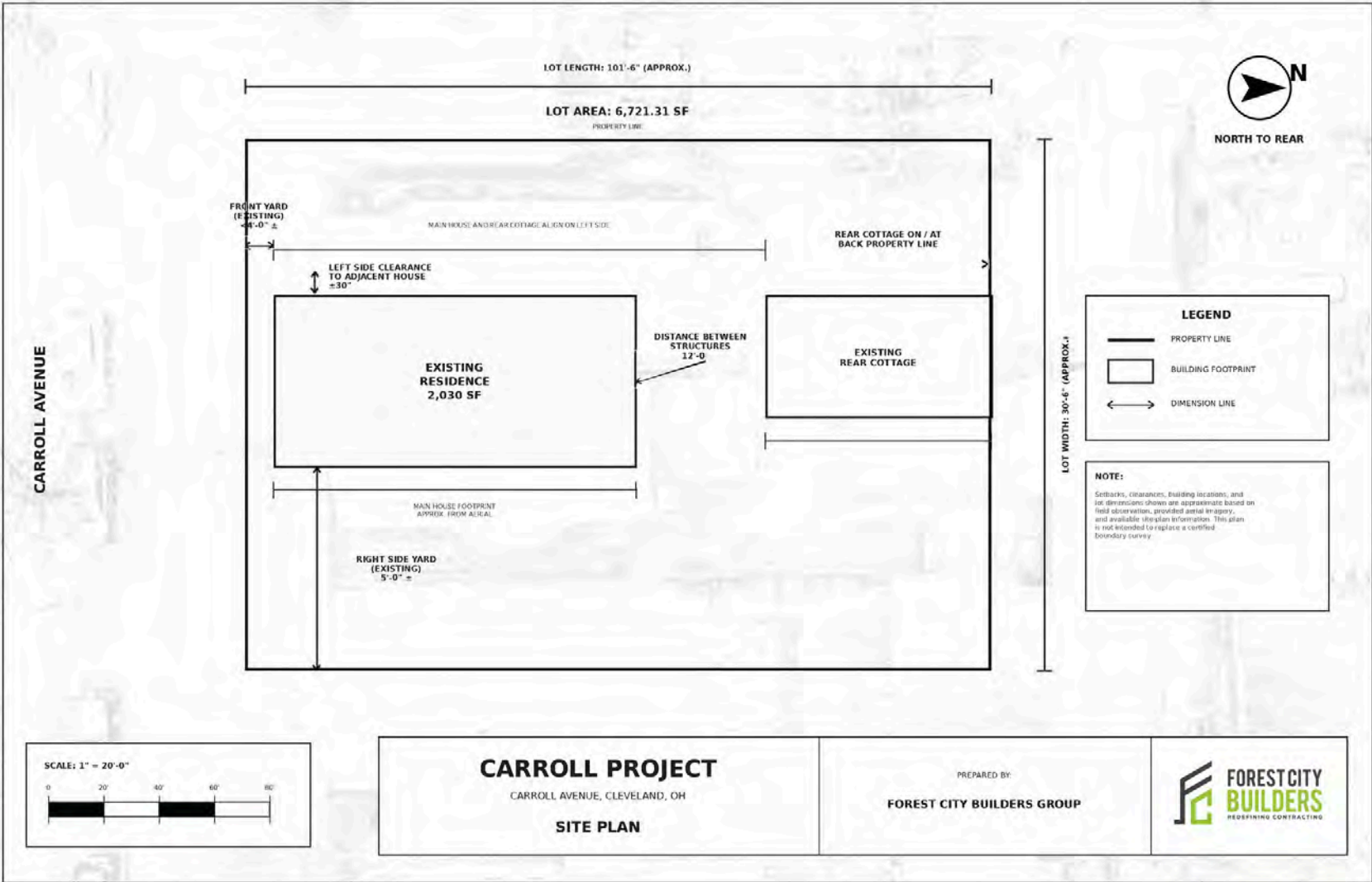


SITE PLAN





# SITE PLAN





# SITE PLAN



# FRONT HOUSE



### Scope of Work

The proposed exterior improvements replace the existing non-original stucco-like cladding with a more historically appropriate siding profile. While utilizing a modern, durable material, the selected siding replicates the proportions and appearance of traditional wood construction, improving both the architectural character and long-term performance of the structure.

#### Cladding:

The existing exterior system (stucco-like/EIFS) will be removed and replaced with LP® SmartSide® engineered wood siding. This material has been selected for its durability, workability, and ability to replicate the appearance of traditional wood siding profiles in a residential application.

#### Siding Orientation & Profile:

The proposed siding will be installed in a vertical orientation to reinforce the structure's distinct character and materiality. Vertical siding frames the vertical bays of the glass block (which wraps approximately one quarter of the street facing facade and half of the eastern facade), by complementing this unique geometry and rhythm, rather than competing visually with it.

The selected profile will provide a consistent, narrow reveal (nickel gap - style joint) between boards, creating subtle shadow lines and a clean, uniform appearance.

## FRONT HOUSE



### Scope of Work

#### Color – Body:

The primary body color will be a historic brown (Rookwood Brown SW2806). This selection is intended to align with historically appropriate color palettes and provide a subdued, period-consistent appearance that complements the surrounding context.

#### Trim:

Existing trim profiles will be maintained and/or replicated where necessary. Trim will be painted in a complementary tone to provide contrast while remaining within a historically appropriate range. Trim detailing will remain simple and consistent with traditional residential construction.

#### Overall Intent:

The proposed work removes a non-historic exterior finish and replaces it with a more appropriate and durable siding system. The design balances historic sensitivity with a simplified, cohesive material expression, resulting in an exterior that is compatible with the character of the home and the surrounding neighborhood.



EXISTING CONDITIONS



Street Facing View



Street Facing View



## EXISTING CONDITIONS



Street Facing View



Back of Main House



## EXISTING CONDITIONS



East Side



East Side

CONCEPT OVERVIEW

FRONT HOUSE



Proposed Color and Siding Orientation

Rookwood Brown - SW 2806

# CONCEPT OVERVIEW

## FRONT HOUSE



Existing Conditions



Proposed Color and Siding Orientation  
Rookwood SW 2806 with vertical siding



# FRONT HOUSE

## Materials & Exterior Finishes

LP SmartSide Panel siding is proposed for the Carroll House to provide a durable, high-performance cladding solution that supports the project's architectural vision. While traditionally utilized in utility structures such as barns and outbuildings, this material is intentionally reinterpreted here to achieve a more refined, residential application.

The panel system offers consistent surface quality and long-term resilience, while allowing for a clean, controlled expression across the façade. Its versatility supports a range of installation patterns and detailing strategies, enabling a design that moves beyond typical utilitarian applications toward a more tailored, design-forward aesthetic.

Selected for both its durability and adaptability, LP SmartSide aligns with the project's goal of blending modern simplicity with contextual sensitivity, resulting in an exterior that is both visually cohesive and built to perform over time.

### Highlights

- Proven durability to resist harsh weather
- Rich cedar grain texture for enhanced beauty
- Pre-primed for exceptional paint adhesion
- Engineered wood strand substrate treated with our proprietary SmartGuard process to help prevent fungal decay and termite damage
- Industry-leading warranty with a 5 year 100% labor and replacement feature and a 50-year prorated, limited warranty of the substrate (see LP SmartSide website for complete warranty details)
- Eliminates the need for additional bracing on load-bearing walls
- Ideal for homes or outdoor buildings in areas of high winds or seismic activity
- Treated engineered wood strand substrate



Materials & Exterior Finishes

Specifications

Dimensions

Coverage Area (sq. ft.)	28 sq ft
Product Length (in.)	84 in
Product Thickness (in.)	0.315
Product Width (in.)	48 in

Details

Color Family	Brown
Color/Finish	Primed
Finish Type	Unfinished
Material	Wood
Siding Features	Pre-Primed, Ready to Paint, Straight Edge, Wood Grain Surface
Vertical/Horizontal	Vertical



LP Smartside Siding Texture

CONCEPT OVERVIEW

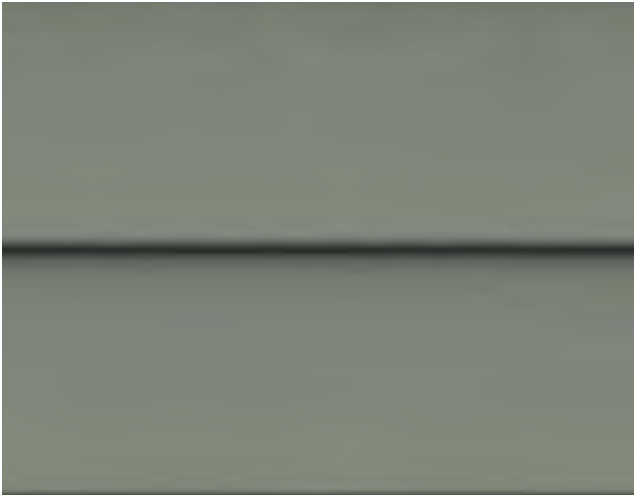
BACK HOUSE



Proposed Back House Materials & Colorways



Proposed Shake Siding - Garden Sage



Proposed Dutchlap Siding - Acadia Green



### Materials & Exterior Finishes

#### Back House:

Front Face of back House: The Snively Forest Products/LP SmartSide 3/8" x 12" x 48" Cedar Texture Shake in Garden Sage is a premium engineered wood siding product designed to provide the authentic look of cedar shakes with enhanced durability.

#### Product Details & Features:

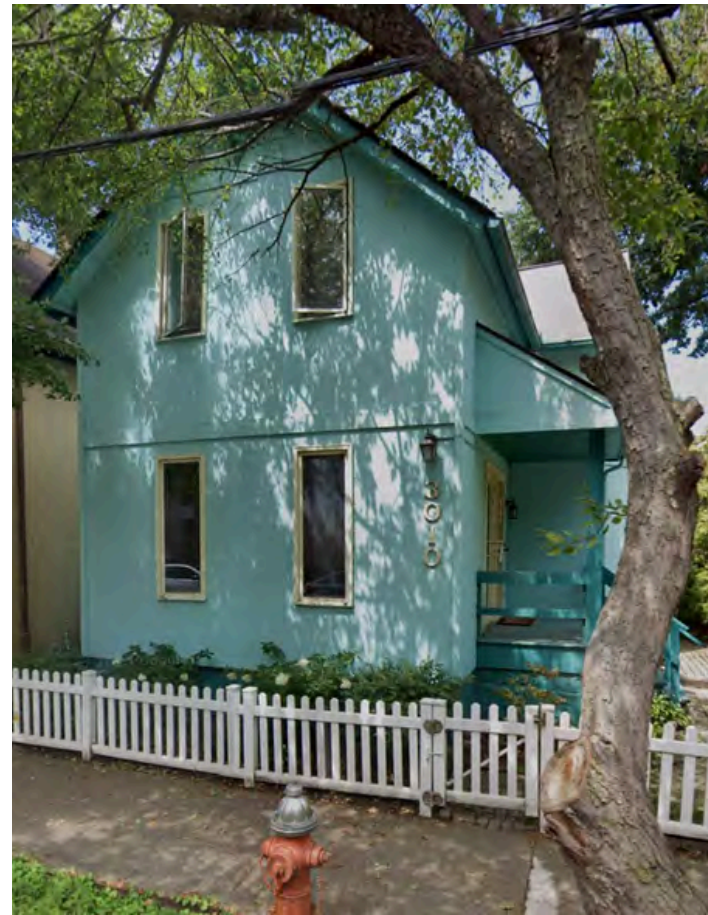
- Color: Garden Sage (pre-finished).
- Dimensions: 3/8 in. x 12 in. x 4 ft. (Actual: 0.354" x 11.69" x 48.56").
- Material: Treated Engineered Wood Strand.
- Features: Reversible (staggered or straight edge), shiplap ends for seamless appearance, and resistant to fungal decay and termites.
- Finish: LP ExpertFinish offers a factory-applied, durable finish.



# VERTICAL SIDING



3010 Carroll Ave.



3010 Carroll Ave.

For reference, photographs of neighboring homes with vertical siding have been included. These examples illustrate that vertical siding is already present within the immediate context and supports the appropriateness of this design approach.

VERTICAL SIDING



1810 W. 48<sup>th</sup> St.



1810 W. 48<sup>th</sup> St.

VERTICAL SIDING



1766 Fulton Ave.



1974 W. 47<sup>th</sup> St.

# LAP SIDING

## Cedar Texture

### Products:

- LP® SmartSide® 38 Series Lap Siding
- LP® SmartSide® ExpertFinish® 38 Series Lap Joint Siding

### DESIGNED & RATED FOR EXTERIOR USE

May be attached direct to studs; see application instructions for fastening and installation requirements  
APA-Certified Lap Siding



### Substrate:

- Features engineered wood strand technology with precisely-sized, shaped, and layered wood strands from Aspen logs
- Made using LP's proprietary SmartGuard® process, which includes industrial-grade resins, water-resistant waxes, zinc borate, and a resin-saturated overlay



**Application Instructions:**  
LPCorp.com/Literature

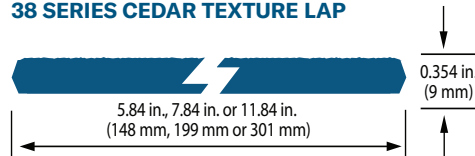
### Sustainability Info:

- ASTM-Verified Carbon Negative
- Made with wood, a renewable resource, vetted through strict Sustainable Forestry Initiative® (SFI®) standards



### Primed Specifications and PIDs:

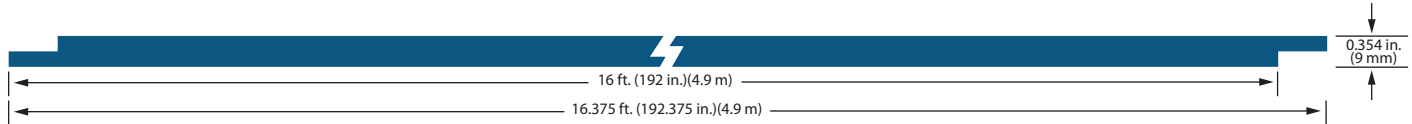
38 SERIES CEDAR TEXTURE LAP



PRODUCT	LENGTH	ACTUAL WIDTH	THICKNESS	MAX SPAN RATING	WEIGHT	PID
38 Series Cedar Texture Lap	16 ft. (192 in.) (4.9 m)	5.84 in. (148 mm)	0.354 in. (9 mm)	16 in.	1.5 PSF	25796
	16 ft. (192 in.) (4.9 m)	7.84 in. (199 mm)	0.354 in. (9 mm)	16 in.	1.5 PSF	25797
	16 ft. (192 in.) (4.9 m)	11.84 in. (301 mm)	0.354 in. (9 mm)	16 in.	1.5 PSF	25799

**ExpertFinish® Color Specifications and PIDs:**

**38 SERIES EXPERTFINISH® CEDAR TEXTURE LAP JOINT SIDING**



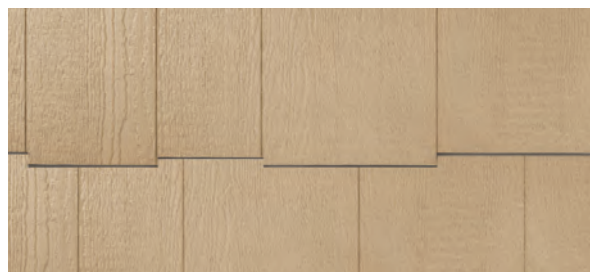
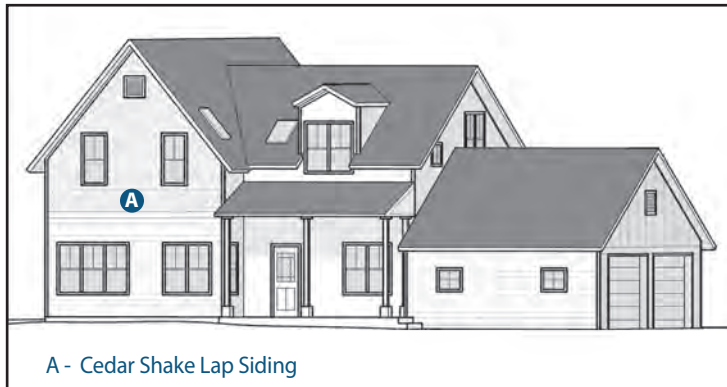
COLOR	LENGTH	ACTUAL WIDTH	THICKNESS	MAX SPAN RATING	WEIGHT	PID
Snowscape White	16 ft. (192 in.) (4.9 m)	5.84 in. (148 mm)	0.354 in. (9 mm)	16 in.	1.5 PSF	41715
	16 ft. (192 in.) (4.9 m)	7.84 in. (199 mm)	0.354 in. (9 mm)	16 in.	1.5 PSF	42271
Sand Dunes	16 ft. (192 in.) (4.9 m)	5.84 in. (148 mm)	0.354 in. (9 mm)	16 in.	1.5 PSF	41841
	16 ft. (192 in.) (4.9 m)	7.84 in. (199 mm)	0.354 in. (9 mm)	16 in.	1.5 PSF	42272
Desert Stone	16 ft. (192 in.) (4.9 m)	5.84 in. (148 mm)	0.354 in. (9 mm)	16 in.	1.5 PSF	41842
	16 ft. (192 in.) (4.9 m)	7.84 in. (199 mm)	0.354 in. (9 mm)	16 in.	1.5 PSF	42274
Quarry Gray	16 ft. (192 in.) (4.9 m)	5.84 in. (148 mm)	0.354 in. (9 mm)	16 in.	1.5 PSF	41837
	16 ft. (192 in.) (4.9 m)	7.84 in. (199 mm)	0.354 in. (9 mm)	16 in.	1.5 PSF	42288
Prairie Clay	16 ft. (192 in.) (4.9 m)	5.84 in. (148 mm)	0.354 in. (9 mm)	16 in.	1.5 PSF	41834
	16 ft. (192 in.) (4.9 m)	7.84 in. (199 mm)	0.354 in. (9 mm)	16 in.	1.5 PSF	42278
Terra Brown	16 ft. (192 in.) (4.9 m)	5.84 in. (148 mm)	0.354 in. (9 mm)	16 in.	1.5 PSF	41845
	16 ft. (192 in.) (4.9 m)	7.84 in. (199 mm)	0.354 in. (9 mm)	16 in.	1.5 PSF	42277
Harvest Honey	16 ft. (192 in.) (4.9 m)	5.84 in. (148 mm)	0.354 in. (9 mm)	16 in.	1.5 PSF	45327
	16 ft. (192 in.) (4.9 m)	7.84 in. (199 mm)	0.354 in. (9 mm)	16 in.	1.5 PSF	45284
Timberland Suede	16 ft. (192 in.) (4.9 m)	5.84 in. (148 mm)	0.354 in. (9 mm)	16 in.	1.5 PSF	41843
	16 ft. (192 in.) (4.9 m)	7.84 in. (199 mm)	0.354 in. (9 mm)	16 in.	1.5 PSF	42269
Garden Sage	16 ft. (192 in.) (4.9 m)	5.84 in. (148 mm)	0.354 in. (9 mm)	16 in.	1.5 PSF	45328
	16 ft. (192 in.) (4.9 m)	7.84 in. (199 mm)	0.354 in. (9 mm)	16 in.	1.5 PSF	45325
Redwood Red	16 ft. (192 in.) (4.9 m)	5.84 in. (148 mm)	0.354 in. (9 mm)	16 in.	1.5 PSF	41840
	16 ft. (192 in.) (4.9 m)	7.84 in. (199 mm)	0.354 in. (9 mm)	16 in.	1.5 PSF	42293
Tundra Gray	16 ft. (192 in.) (4.9 m)	5.84 in. (148 mm)	0.354 in. (9 mm)	16 in.	1.5 PSF	41846
	16 ft. (192 in.) (4.9 m)	7.84 in. (199 mm)	0.354 in. (9 mm)	16 in.	1.5 PSF	42300
Summit Blue	16 ft. (192 in.) (4.9 m)	5.84 in. (148 mm)	0.354 in. (9 mm)	16 in.	1.5 PSF	41844
	16 ft. (192 in.) (4.9 m)	7.84 in. (199 mm)	0.354 in. (9 mm)	16 in.	1.5 PSF	42273
Rapids Blue	16 ft. (192 in.) (4.9 m)	5.84 in. (148 mm)	0.354 in. (9 mm)	16 in.	1.5 PSF	41839
	16 ft. (192 in.) (4.9 m)	7.84 in. (199 mm)	0.354 in. (9 mm)	16 in.	1.5 PSF	42287
Cavern Steel	16 ft. (192 in.) (4.9 m)	5.84 in. (148 mm)	0.354 in. (9 mm)	16 in.	1.5 PSF	41835
	16 ft. (192 in.) (4.9 m)	7.84 in. (199 mm)	0.354 in. (9 mm)	16 in.	1.5 PSF	42301
Midnight Shadow	16 ft. (192 in.) (4.9 m)	5.84 in. (148 mm)	0.354 in. (9 mm)	16 in.	1.5 PSF	45329
	16 ft. (192 in.) (4.9 m)	7.84 in. (199 mm)	0.354 in. (9 mm)	16 in.	1.5 PSF	45326
Abyss Black	16 ft. (192 in.) (4.9 m)	5.84 in. (148 mm)	0.354 in. (9 mm)	16 in.	1.5 PSF	41774
	16 ft. (192 in.) (4.9 m)	7.84 in. (199 mm)	0.354 in. (9 mm)	16 in.	1.5 PSF	42279
Washed White	16 ft. (192 in.) (4.9 m)	7.84 in. (199 mm)	0.354 in. (9 mm)	16 in.	1.5 PSF	46731
	16 ft. (192 in.) (4.9 m)	7.84 in. (199 mm)	0.354 in. (9 mm)	16 in.	1.5 PSF	46730
Smoky Slate	16 ft. (192 in.) (4.9 m)	7.84 in. (199 mm)	0.354 in. (9 mm)	16 in.	1.5 PSF	46730
	16 ft. (192 in.) (4.9 m)	7.84 in. (199 mm)	0.354 in. (9 mm)	16 in.	1.5 PSF	46729
Bonsai Black	16 ft. (192 in.) (4.9 m)	7.84 in. (199 mm)	0.354 in. (9 mm)	16 in.	1.5 PSF	46729
	16 ft. (192 in.) (4.9 m)	7.84 in. (199 mm)	0.354 in. (9 mm)	16 in.	1.5 PSF	46728
Weathered Walnut	16 ft. (192 in.) (4.9 m)	7.84 in. (199 mm)	0.354 in. (9 mm)	16 in.	1.5 PSF	46728
	16 ft. (192 in.) (4.9 m)	7.84 in. (199 mm)	0.354 in. (9 mm)	16 in.	1.5 PSF	46727
Aged Amber	16 ft. (192 in.) (4.9 m)	7.84 in. (199 mm)	0.354 in. (9 mm)	16 in.	1.5 PSF	46727
	16 ft. (192 in.) (4.9 m)	7.84 in. (199 mm)	0.354 in. (9 mm)	16 in.	1.5 PSF	46726
Saffron Cedar	16 ft. (192 in.) (4.9 m)	7.84 in. (199 mm)	0.354 in. (9 mm)	16 in.	1.5 PSF	46726

NEW NATURALS COLLECTION™ LAP

See LPCorp.com for product, warranty, and installation details. Metric units are rounded. PSF = Pounds Per Square Foot  
Contact your LP Sales Rep for product availability.  
All colors shown are representative and may not be an exact match.



## LP SMARTSIDE CEDAR SHAKE PRIMED LAP SIDING



### ON SITE STORAGE

- Store off the ground well supported, on a flat well-drained surface. (Diagram 1a)
- Additional support may be required to achieve a safe clearance from the ground.
- Store products under a roof or separate waterproof covering. (Diagram 1a)
- When the waterproof covering is removed, cut all unit banding.
- Keep siding clean and dry. Inspect prior to installation.



Diagram 1a

### PREPARATION

#### General Information

- At the time of manufacture, siding meets or exceeds the performance standards set forth in ICC-ES AC321 and has achieved code recognition under ESR-1301 and CCMC 11826-L, APA recognition under PR-N124, and HUD-MR1318c. For copies of these reports, call LP Customer Support at 800-648-6893 or go online at <https://lpcorp.com/resources/product-literature/#>.
- LP's application instructions describe the minimum requirements needed to assure LP® SmartSide® Limited Warranty coverage.
- Failure to follow the LP application instructions could result in reduced product service life and may lead to denial of coverage under the LP SmartSide Limited Warranty.

#### Before You Begin

- Minimum 6 inch (152 mm) clearance must be maintained between siding and finish grade (ground cover).
- Siding applied adjacent to porches, patios, walks, roofs or other hard finished surfaces must have a clearance of at least 1 inch (25 mm) above that surface. (Diagram 2a)
- Siding must not be in direct contact with masonry, concrete, brick, stone, stucco or mortar. Backer rod is recommended to properly space materials at these locations.
- Apply siding in a manner that prevents moisture intrusion and water accumulation.
- All wood substrate exposed to the weather must be sealed in a manner that prevents moisture intrusion and water accumulation.
  - Seal ALL exposed cuts of siding and trim. Field spray applied coatings on cuts are not recommended.
  - Sealing can be accomplished by applying a coating or sealant according to the manufacturer's requirements.
- Do not use staples.
- **Siding is designed to be installed directly to wood structural panel wall sheathing**, or can be installed directly to studs spaced a maximum of 16 inches (406 mm) on-center (o.c.), or over rigid foam insulation or to furring strips over concrete/masonry walls.

## PREPARATION

### Trim

- Trim should be thick enough so the shake does not extend beyond the face of the trim.
  - LP SmartSide 540 Series Trim is recommended when the shake reveal selected ranges between a maximum of 10 inches (254 mm) to a minimum of 7 inches (178 mm).
- Trim and fascia must be applied in a manner that will not allow moisture intrusion or water accumulation.

### Moisture Control

- Moisture control and moisture vapor control are critical elements of proper housing design and construction. Check your local building codes for application procedures for handling moisture and water vapor in your area.
- Follow all applicable building code specifications relating to prevention of moisture intrusion into the wall assembly. LP® SmartSide® siding is a wood product, and, as with all wood products, must be kept free from excessive moisture. Lack of proper ventilation; exposure to constant or repetitive sources of water such as sprinklers, condensation, inadequate flashing; improper sealing; or failure to follow common building practices that prevent moisture intrusion into the wall system may cause damage, and products subject to such treatment will be excluded from warranty coverage.
- As with all wood products, do not apply engineered wood siding to a structure having excessive moisture conditions such as drying concrete, plaster, or wet blown cellulose insulation. If such conditions exist, the building should be well ventilated to allow it to dry prior to the application of the siding.
- Gutters with kick-out flashing and eave drip edge are recommended for control of roof water run off. (Diagram 2a)

### Flashing Windows, Doors & Openings

- All openings must be properly sealed or flashed in a manner that prevents moisture intrusion or accumulation.
- Follow window and door manufacturers' instructions for flashing these components.
- Refer to LP SmartSide Trim & Fascia Application Instructions for additional flashing information and details.

### Secondary Water-Resistant Barrier (WRB)

- A properly installed, code approved water-resistive barrier is required behind the siding. Consult your local building code for details.
- LP will assume no responsibility for water penetration or damage it may cause.

### Water Run-Off Control

- Properly installed flashing materials will help direct water away from common water collecting areas.
- All flashing material shall be metal or another durable material that under normal outdoor environmental conditions will last for a period of not less than 50 years.
- All flashing materials must have a minimum 4 inch (102 mm) upper leg.
  - Add a 4 inch (102 mm) wide adhesive flashing to flash legs less than 4 inches (102 mm).
- Properly integrate flashing with the secondary WRB according to the WRB manufacturer's instructions. Use housewrap, flashing tape, kickout flashing, step flashing, Z-flashing, drip edge, gutters or other items as needed to maintain counter-flashing principle.
- Install kickout flashing to direct the water into the gutter. (Diagram 2a)
- Install step flashing that has a minimum 4 inch (102 mm) upper leg. (Diagram 2a)
- Maintain a minimum 1 inch (25 mm) clearance between the end of the gutter and the adjoining wall to allow for proper maintenance of the siding. (Diagram 2a)
- Seal ALL exposed cut edges.

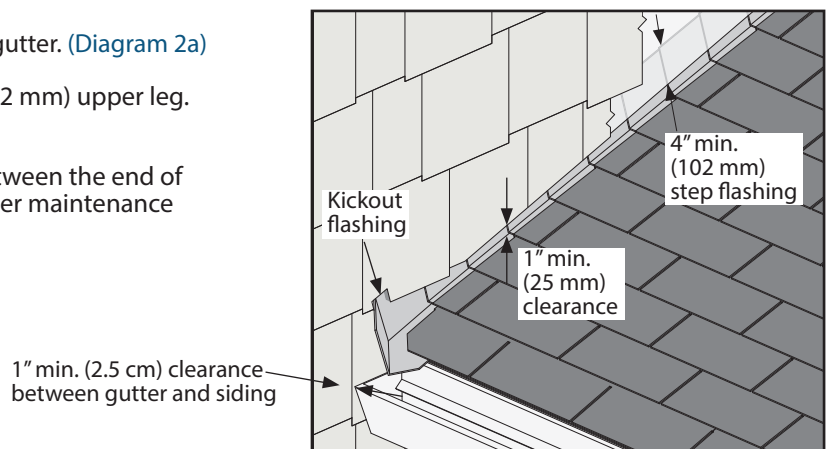


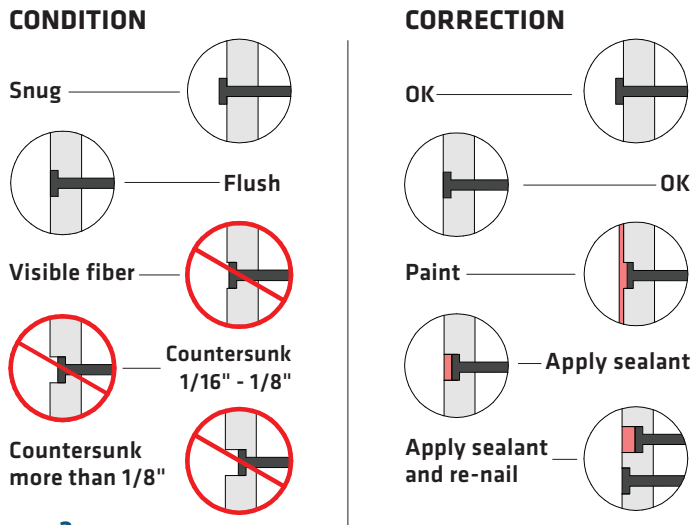
Diagram 2a

## PREPARATION

### Cutting

- For the cleanest cut and longer blade life, a fine-tooth carbide tipped blade is recommended.
- Siding is manufactured with a special edge coating which reduces moisture intrusion. If siding is ripped you must take special care to prime, paint and seal all exposed wood fiber as described in the Finishing Instructions on page 8.
- Climb cut the surface of the siding such that the rotation of the blade cuts downward on the primed or prefinished surface.
- **Do not miter edges.**

### General Application Equipment



- **Fasteners:** Apply and correct overdriven fasteners as shown in [Diagram 3a](#).
- **Sealant:** Use an exterior-quality, non-hardening, paintable sealant. Use a Class 25 or higher exterior sealant meeting the ASTM C920 Standard for Specification for Elastomeric Joint Sealants. Follow the sealant manufacturer's instructions for application.
- **Paint:** A premium quality exterior 100% acrylic latex paint, specially formulated for use on wood or engineered wood substrates is highly recommended. Semi-gloss or satin finish oil or alkyd paints are acceptable. For flat alkyd paint, check with the coating manufacturer to ensure it is suitable for engineered wood siding.

Diagram 3a

## INSTALLATION

### Fastening Instructions - Sheathing Only

- Install over wood structural panels a minimum 7/16 Category with an APA® Trademark that contains the consensus Standard DOC PS 1 or DOC PS 2.
  - Exception: LP® FlameBlock® Fire-Rated OSB Sheathing.
- **Fastener size:** Use a minimum **0.092 inch** diameter **ring shank** nail, hot-dipped galvanized (ASTM A153) or equivalent. Fasteners shall be corrosion resistant and capable of preventing rust, stain and deterioration under normal outdoor environmental conditions for a period of no less than 50 years.
- **Fastener placement:** A minimum 3/4 inch (19 mm) down from top edge of siding. Fasteners shall be placed 1 inch (25 mm) from ends. ([Diagram 3b & 4b](#))
- **Fastener length:** Long enough to fully penetrate wood structural panel sheathing by at least 1/4 inch (6 mm). Ensure that the ring shanks of the nail fully engage the wood structural panel sheathing. ([Diagram 3b](#))
- **Fastener spacing:** Space ring shank nails a maximum of 8 inches (203 mm) o.c. across the top of siding. ([Diagram 4a](#))
- Apply siding to wall assembly directly to wood structural panel sheathing.
- Begin by nailing a starter strip approximately 3/8 inch (10 mm) thick x 1-1/2 inches (38 mm) wide flush with bottom edge of sill plate.

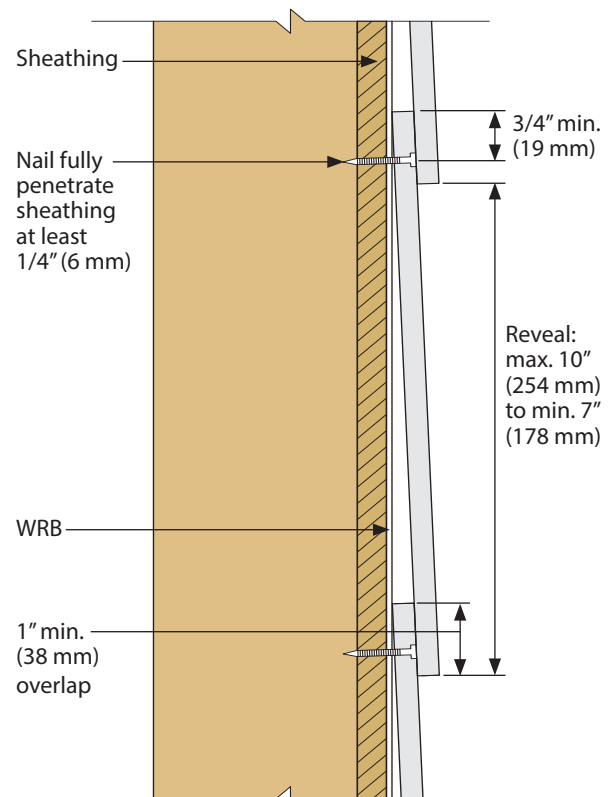
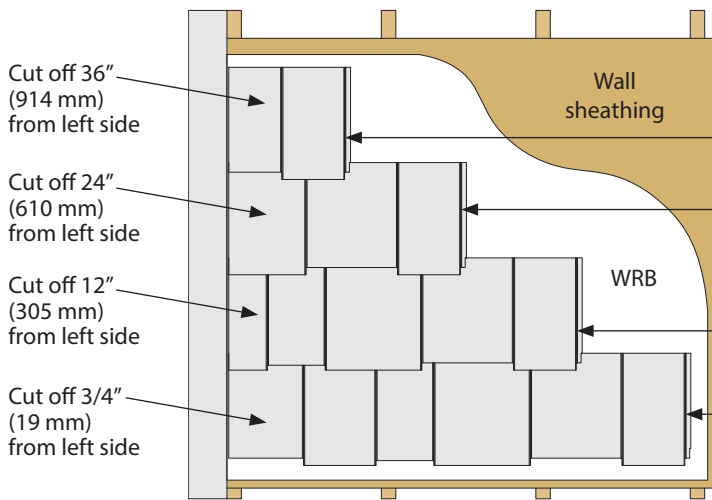


Diagram 3b

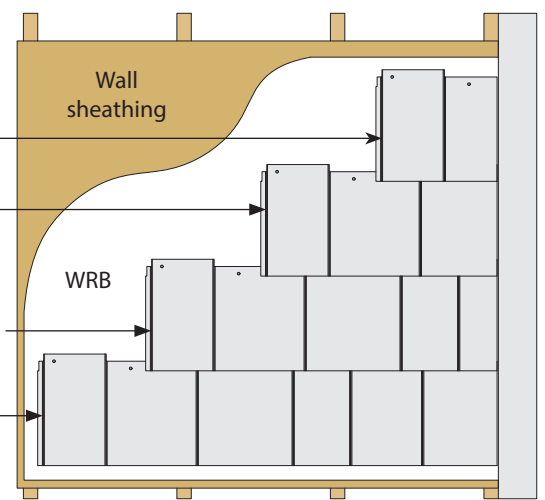
## INSTALLATION

### Fastening Instructions - Sheathing Only *(continued)*

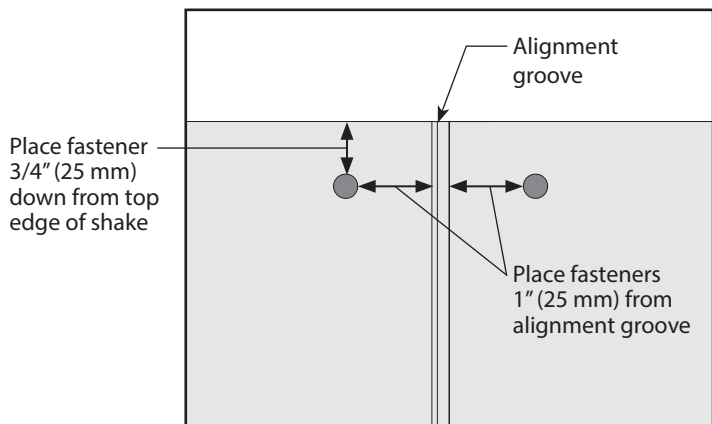
- LP® SmartSide® Cedar Shake is a reversible siding product that can be applied with either a staggered edge appearance or rotated 180 degrees to achieve straight edge appearance. (Diagrams 4a & 4b)
- Staggered Edge:** Starting from **left** to right, level and install shake so bottom edge is no more than 1/2 inch (13 mm) below the starter strip (Diagrams 4a), or
- Straight Edge:** Starting from **right** to left, level and install shake so bottom edge is no more than 1/2 inch (13 mm) below the starter strip. (Diagrams 4b)
- Use the alignment groove in shiplap edge as a spacing guide. Do not overlap the alignment groove. (Diagrams 4b & 5b)
  - Alternate reveals are allowed. Trim should be thick enough so the shake does not extend beyond its face.
- To obtain the best shake appearance using **staggered edge or straight edge**, cut and fasten the starter pieces for each course using a 12 inch (305 mm) stair-step method as shown in (Diagrams 4a & 4b).
- Overlap shakes using the alignment notch to conceal nail heads and achieve uniform reveal. The alignment notch provides for an overlap of at least 1 inch (25 mm) at the shortest staggered edge to a maximum of 1-3/4 inches (45 mm) at the longest staggered edge regardless of whether the staggered or straight edge is exposed.
- The shake should fit against the window/door trim or the corner board leaving a 3/16 inch (5 mm) gap.
  - Shiplap at this location must be removed to full panel thickness and caulked.
  - The opposite shiplap edge is facing up, to receive the next piece of siding.



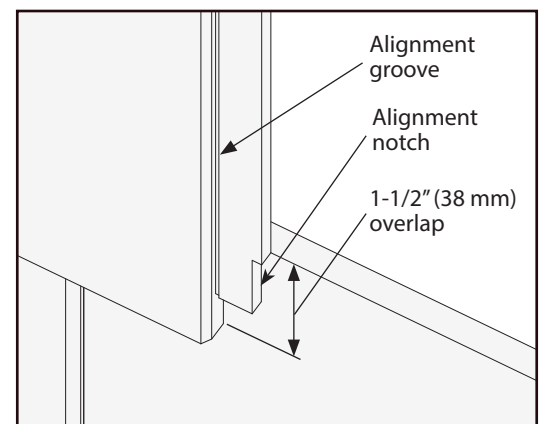
**Diagram 4a**  
Staggered Edge



**Diagram 4b**  
Straight Edge



**Diagram 4c**



**Diagram 4d**

## INSTALLATION

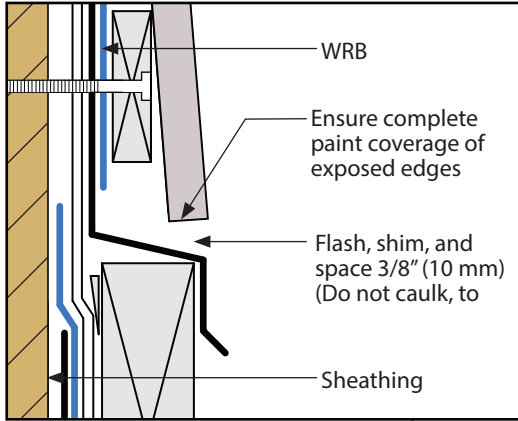


Diagram 5a

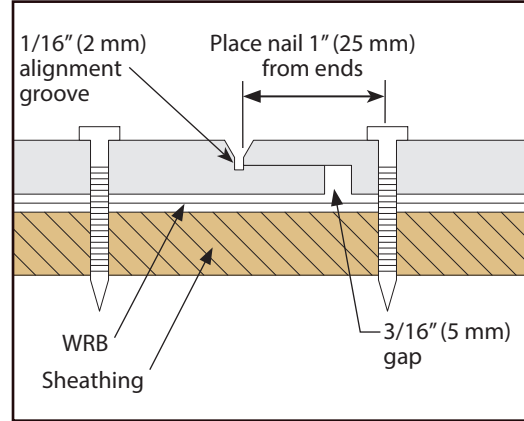


Diagram 5b

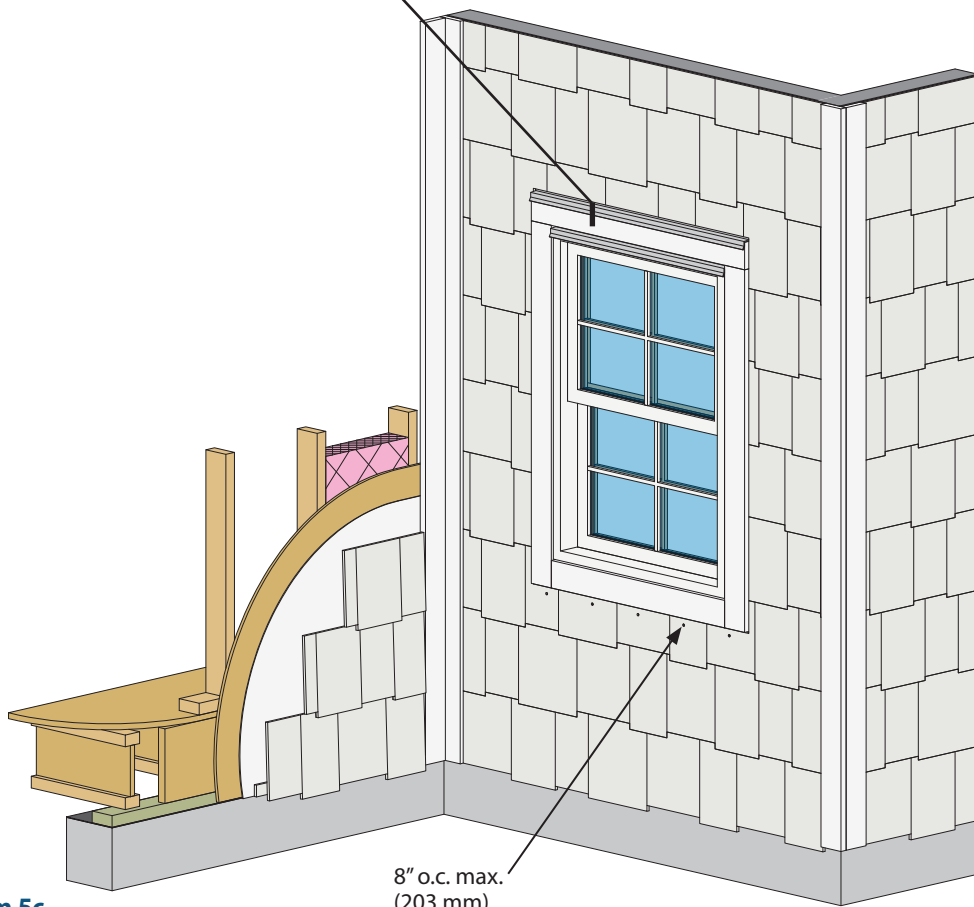
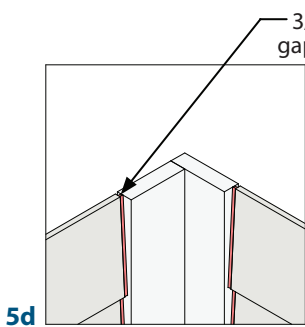
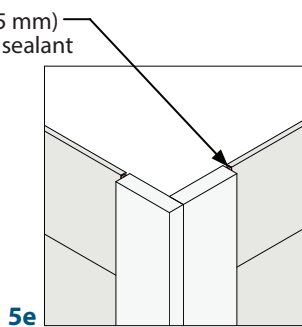


Diagram 5c



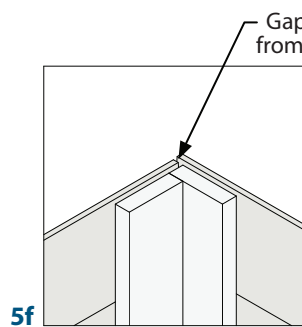
5d

**PREFERRED  
INSIDE CORNER**



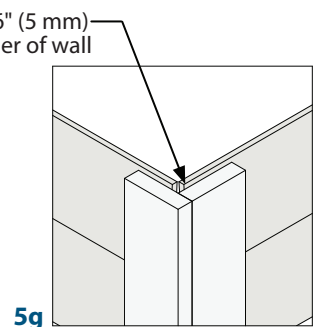
5e

**PREFERRED  
OUTSIDE CORNER**



5f

**ALTERNATE  
INSIDE CORNER**



5g

**ALTERNATE  
OUTSIDE CORNER**

## INSTALLATION

### Alternative Fastening Option: Fastening Instructions - Direct to Stud

- Siding may be installed directly to studs spaced no greater than 16" (406 mm) o.c. that have adequate corner bracing.
- Use a minimum **0.092 inch** diameter **smooth shank** nail, hot-dipped galvanized (ASTM A153) or equivalent. Fasteners shall be corrosion resistant and capable of preventing rust, stain and deterioration under normal outdoor environmental conditions for a period of no less than 50 years.
- Fastener placement:** A minimum 3/4 inch (19 mm) down from top edge of siding. Do not place fastener through top shiplap, place fastener 1 inch (25 mm) from end. (Diagram 6b) Place fastener into bottom shiplap a minimum 3/4 inch (19 mm) down from top edge of siding. (Diagram 6b)
- Fastener length:** Long enough to fully penetrate studs by 1-1/2 inch (38 mm). (Diagram 6b)
- Fastener spacing:** Space ring shank nails a maximum of 16 inches (406 mm) o.c. across the top of siding. (Diagram 6a)
- Begin by nailing a starter strip approximately 3/8 inch (10 mm) thick x 1-1/2 inches (38 mm) wide flush with bottom edge of sill plate.
- Staggered Edge:** Starting from **left** to right, level and install shake so bottom edge is no more than 1/2 inch (13 mm) below the starter strip, or
- Straight Edge:** Starting from **right** to left, level and install shake so bottom edge is no more than 1/2 inch (13 mm) below the starter strip.
- Use the alignment groove in shiplap edge as a spacing guide. Do not overlap the alignment groove. (Diagrams 4b & 5b)
  - Alternate reveals are allowed. Trim should be thick enough so the shake does not extend beyond its face.
- To obtain **staggered edge** appearance, cut and fasten starter pieces for each course using a 16 inch (406 mm) stair-step method as shown in (Diagrams 6a).
- To obtain **straight edge** appearance, rotate shake siding drip edge 180 degrees, cut and fasten starter pieces for each course using a 16 inch (406 mm) stair-step method.
- Overlap shakes using the alignment notch to conceal nail heads and achieve uniform reveal. The alignment notch provides for an overlap of at least 1 inch (25 mm) at the shortest staggered edge to a maximum of 1-3/4 inches (45 mm) at the longest staggered edge regardless of whether the staggered or straight edge is exposed.
- The shake should fit against the window/door trim or the corner board leaving a 3/16 inch (5 mm) space.
  - Shiplap at this location must be removed to full panel thickness and caulked.
  - The opposite shiplap edge is facing up, to receive the next piece of siding.
- When fastening direct to stud, every other shake line (or keyway) will fall in line with the shake lines on the courses above and below. (Diagram 6a)

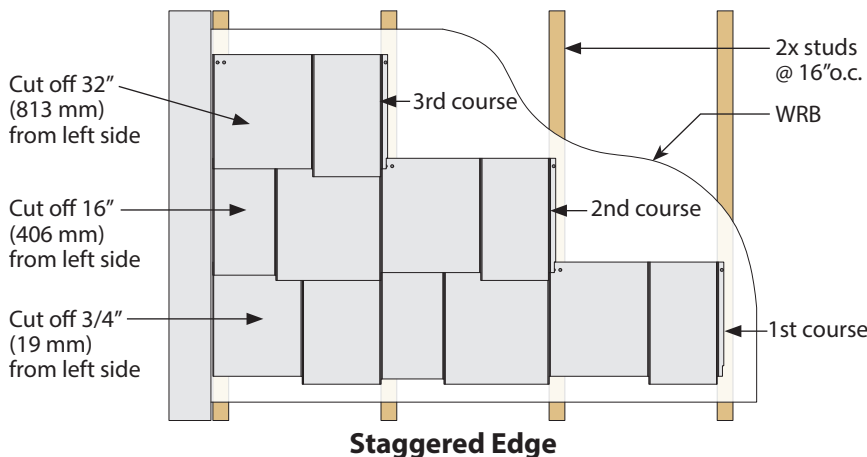


Diagram 6a

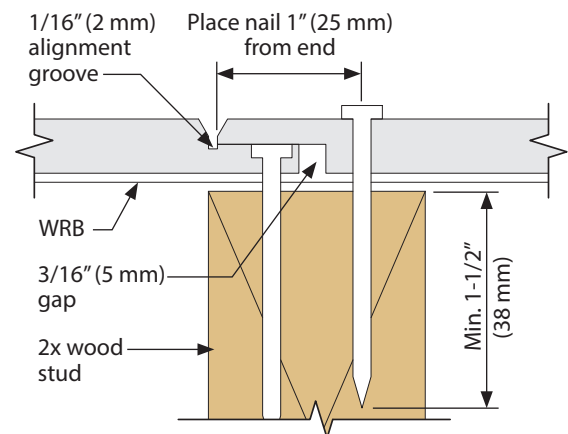


Diagram 6b

## INSTALLATION

### Alternative Fastening Option: Attachment to Furring Strips over Rigid Foam Insulation > 1 inch, or Furring Strips over Concrete/Masonry

- For rigid foam insulation greater than 1 inch (25 mm), install over a minimum 1x4 (25 mm x 102 mm) nominal size Southern Pine furring strips with a specific gravity greater than or equal to 0.55, no more than 12 inches (305 mm) o.c. in wind speed areas less than or equal to 200 mph.
- Use a minimum **0.120 inch** diameter **ring shank** nail, hot-dipped galvanized (ASTM A153) or equivalent.
- **Fastener placement:** A minimum 3/4 inch (19 mm) down from top edge of the siding.
- **Fastener length:** Shall fully penetrate a minimum 1/2 inch (13 mm) into furring strips. Caution: fastener shall not bottom out on a masonry wall leaving the fastener head less than flush with the face of trim or siding. (Diagram 7b)
- Blind nail with a minimum of two ring shank nails per furring strip. (Diagram 7a)
- Shiplap joints shall occur over furring strips and joints should be staggered. (Diagram 7b)
- Overlap shakes using the alignment notch to conceal nail heads and achieve uniform reveal. The alignment notch provides for an overlap of at least 1 inch (25 mm) at the shortest staggered edge to a maximum of 1-3/4 inch (45 mm) at the longest staggered edge regardless if whether the staggered or straight edge is exposed.
- Siding shall be installed to safely resist all loads, including wind loads, of the locally adopted building codes. The installation of siding shall result in a system that provides a load path that meets the requirements for the transfer of loads from their point of origin through the load-resisting elements to the structure. The mechanical connection of the furring strip to structure is the responsibility of a design professional. LP assumes no liability for any loss or damage caused by the design of the mechanical connection of the furring strip to the structure and is expressly released by the purchaser or owner from any such loss or liability.
- **Exception:** Shakes may be nailed directly to rigid foam insulation less than or equal to 1 inch (25 mm) thick, unless a drainage plane is required by the local building code. Nail length must be increased to ensure a minimum 1-1/2 inch (38 mm) fastener penetration into the structural framing or wood structural panels and structural framing
- Louisiana-Pacific Corporation will assume no responsibility for any damage or condition arising from the use of rigid foam insulation.

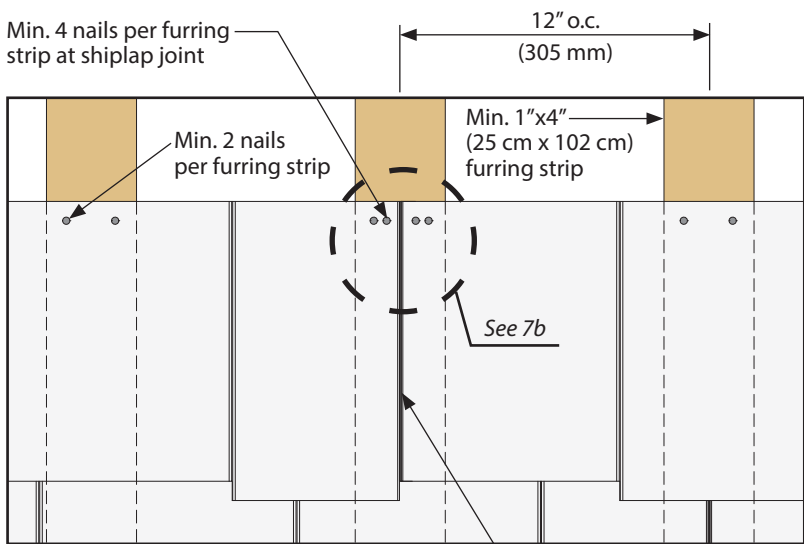


Diagram 7a

Shiplap joints shall occur over furring strips

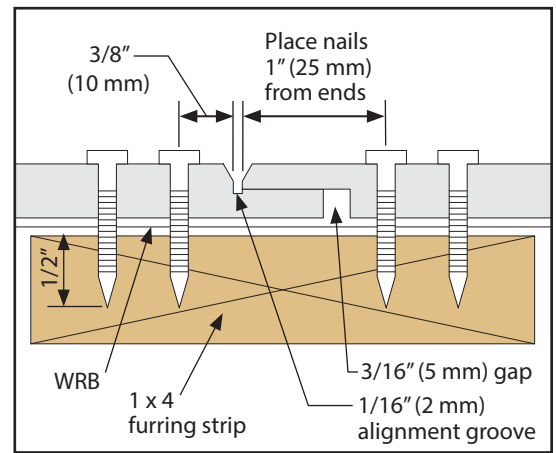


Diagram 7b

## INSTALLATION

### Finishing Instructions

- Prime all exposed wood substrate before painting.
- Thoroughly paint the bottom edges of siding, especially all cut ends near grade or next to the roof line.
- Apply paint as soon as possible and within 180 days of application.
- Follow the coating manufacturer's application and maintenance instructions.

### DO NOT USE:

- Stain.
- Vinyl-based paint (vinyl acetate or PVA).

### LIMITED WARRANTY

The Louisiana-Pacific Corporation ("LP") LP® SmartSide® Trim and Siding (the "Products") Limited Warranty (the "Warranty") applies only to structures on which the Products have been applied, finished and maintained in accordance with the published application, finishing and maintenance instructions in effect at the time of application. Products affected by a failure to follow such application, finishing or maintenance instructions ("Affected Products") will be excluded from coverage under the Warranty.

**LP assumes no liability for any loss or damage caused by the Affected Products and is expressly released by the purchaser or owner from any such loss or liability.**

Any modification of the Warranty or the application, finishing and maintenance requirements is void unless approved in writing by LP prior to application.

For a copy of the warranty or installation and technical support, visit the LP Web site at:

**www.lpcorp.com**

WARRANTY REMEDIES ARE NOT AVAILABLE IF REQUIREMENTS ARE NOT FOLLOWED.

or for additional support call 800-648-6893

**⚠ WARNING: Drilling, sawing, sanding or machining wood products can expose you to wood dust, a substance known to the State of California to cause cancer. Avoid inhaling wood dust or use a dust mask or other safeguards for personal protection.**

For more information go to [www.P65Warnings.ca.gov/wood](http://www.P65Warnings.ca.gov/wood).



Louisiana-Pacific Corporation  
414 Union Street, Suite 2000  
Nashville, TN 37219

[www.lpcorp.com](http://www.lpcorp.com)  
[www.lpsmartside.com](http://www.lpsmartside.com)

© 2020 Louisiana-Pacific Corporation. All rights reserved. LP, SmartSide, and FlameBlock are registered trademarks of Louisiana-Pacific Corporation. APA is a registered trademark of APA - The Engineered Wood Association. Printed in U.S.A.

NOTICE: Louisiana-Pacific Corporation periodically updates and revises its product information. The information in this document is subject to change without notice. To verify that this version is current, call 800-648-6893.

# CERTIFICATE OF CONFORMANCE

## Cedar Knolls™ Vinyl Siding

Cedar Knolls Vinyl Siding panels are manufactured to the following specifications.

### MATERIAL SPECIFICATIONS

All products meet or exceed the Standard Specification for Rigid PVC Siding (ASTM D-3679) and its referenced documents. An independent laboratory through unannounced inspection of all manufacturing facilities verifies the conformance to this specification. ASTM D-3679 is the specification used by building code authorities. Where not defined in ASTM D-3679, products also meet Norandex Stringent Quality Control Standards.

### PHYSICAL DATA

Panel Thickness: .044" (+/- .001")

Panel Projection: 5/8"

Color: Uniformity is spectrophotometrically controlled.

Texture: Natural Cedar embossed woodgrain pattern.

Lock: Optically measured and controlled.

Gloss: Uniform low gloss maintained with a 75° glossmeter.

### PRODUCT TEST DATA

Heat Shrinkage:	<3% at 160°F
Impact Resistance Mean Failure Energy: Surface	> 60 in. lb.
Distortion:	None at 120°F
Length:	Within-1/4" specification
Warp/Camber:	<1/8"
Max Sustained Windload Test Pressure:	41.7 psf
Standard Windload Design Pressure Rating:	56.0 psf*
Maximum Windspeed:	152 MPH* (ASD)
Coefficient of Linear Expansion (in/in/°F)	<4.5x10 <sup>-5</sup>

\* Windspeed calculations based on VSI, ASTM D3679-17, ASCE 7-16, 30 ft. high, Exposure B

### FIRE RESISTANCE

All siding, soffit, and accessories distributed by Norandex have a Class A flame spread classification per 2021 International Residential Code (IRC) and International Building Code (IBC).

<b>ASTM E84:</b>	<b>ASTM D1929:</b>
Flame Spread Index: ≤25	Self-Ignition Temperature: 860°F
Smoke Developed Index: >450	<b>ASTM D635:</b>
Fuel Contribution: 0	Classified: CC1**

\*\* Tested specimens did not burn at 25 mm mark. Material was shown to be self-extinguishing. Therefore no average time of burning or average extent of burning can be calculated. For more information obtain a brochure on the fire properties of siding by contacting the Vinyl Siding Institute at [www.vinylsiding.org](http://www.vinylsiding.org)

### RELEVANT CODES AND REGULATIONS COMPLIANCE

ASTM D-3679, Florida Building Code Approval - FL12500, Intertek CCRR-0184  
Vinyl Siding Institute (VSI) PCL-0801, PER-0803

### PROFILES

#### D4

2-4" Exposure  
12'6" Length  
24 pieces/carton  
2 squares/carton

#### D5

2-5" Exposure  
12' Length  
20 pieces/carton  
2 squares/carton

#### D5 Dutchlap

2-5" Exposure  
12' Length  
20 pieces/carton  
2 squares/carton

### COLORS (29)

- White
- Beige
- Champagne
- Sierra \*
- Cream
- Yellow
- Wheat
- Sandstone
- Mocha \*
- Russet +
- Maverick Brown +
- Firebrick +
- Cactus
- Fern \*
- Khaki \*
- Olive \*
- Myrtle +
- Silver
- Smoke \*
- Granite \*
- Seaport +
- Geneva Blue \*
- Steel Blue +
- Deep Water +
- Graphite +
- Carbon +
- Rustic Cedar +
- Acadia Green +
- Jamestown Blue +

\* Premium Colors featuring ColorHold® capping resins, a UV-Stable acrylic polymer

+ Designer Collection Color

# Case 26-029

Certificate of Appropriateness

Broadway Avenue Historic District

## Ascent at Broadway 5700 Broadway Avenue

### Façade Renovation

Project Representatives: Gabrielle Benson, DS Architecture, LLC; Ali Clark,  
Ascent at Broadway  
Ward 3: Councilmember Gray



Ascent at Broadway Storefront  
Greater Cuyahoga Valley Historic Design Review Advisory Committee  
May 14th, 2026



SITE LOCATION MAP



SITE CONTEXT MAP



EXISTING CONDITIONS





# HISTORIC STREETScape - 1920s vs 1960 vs 2022



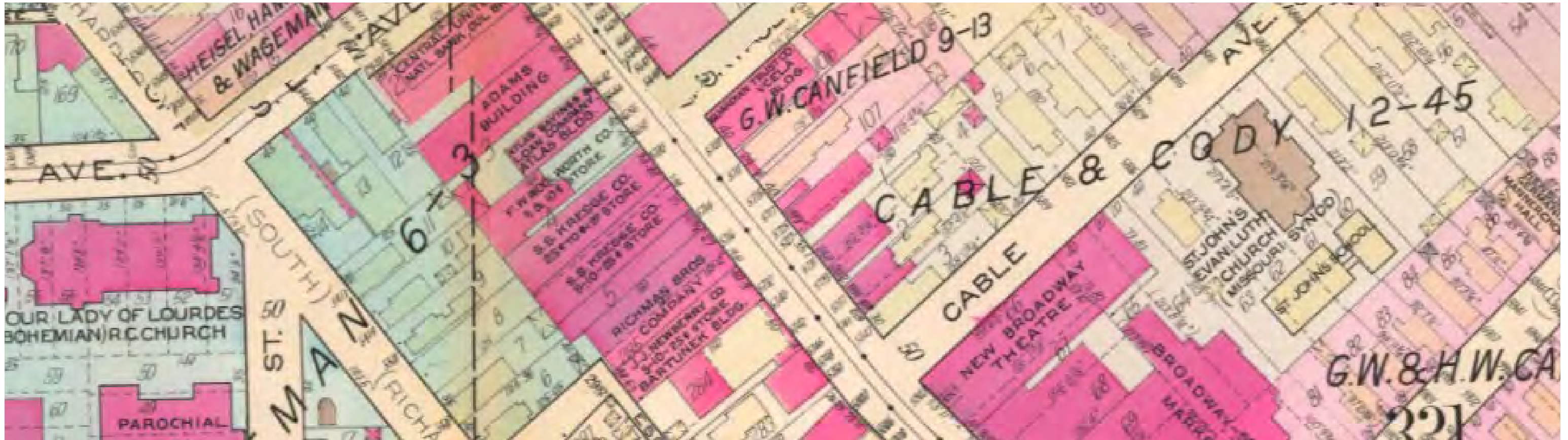
Litho-Chrome Postcard, c. 1900-1925  
Broadway and E. 55th St., looking South  
(Project site not shown, Kresge Bldg. constructed in 1925)



Photograph, c. 1960  
CTS Bus at Broadway and E. 55th St.  
(Project site behind bus)



Google Earth, c. 2022  
Broadway and E. 55th St.  
(Project site behind truck, top of facade visible)



Historic Street Map, 1927-1937

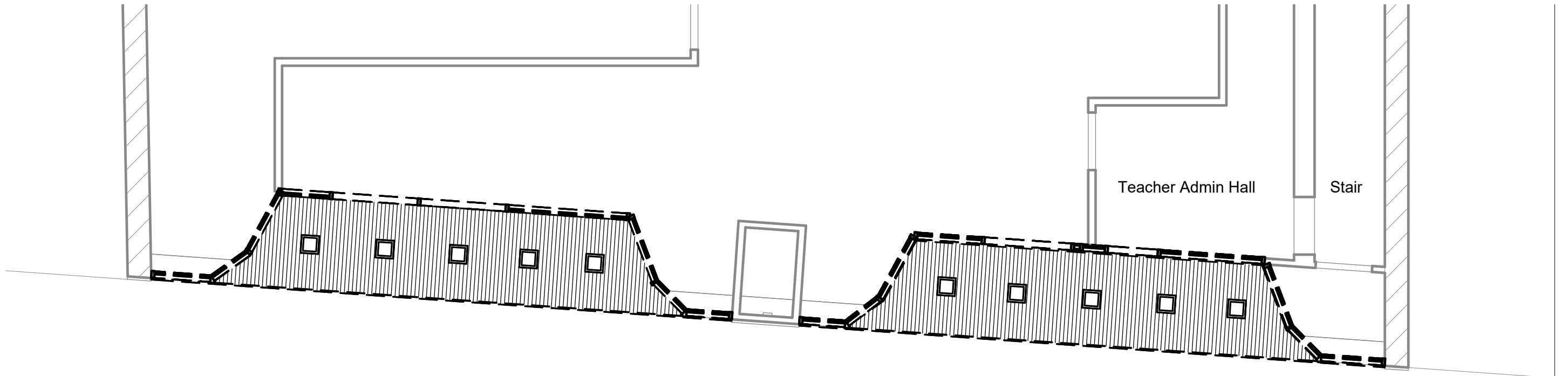
ASCENT AT BROADWAY - EXISTING CONDITIONS



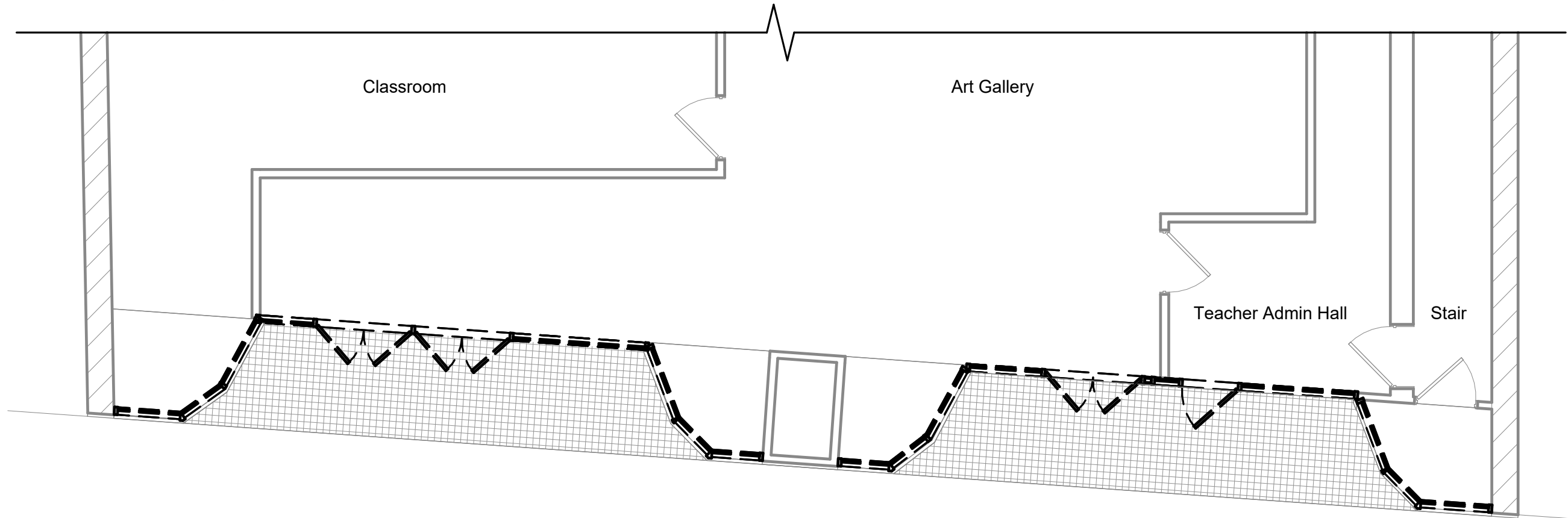
DEMO WEST ELEV  
3/16"=1'

 DEMOLITION

# ASCENT AT BROADWAY - EXISTING CONDITIONS



LEVEL 1 DEMO RCP  
3/16"=1'



LEVEL 1 DEMO  
3/16"=1'



**ASCENT AT BROADWAY - PROPOSED STOREFRONT**



**WEST ELEV**  
**3/16"=1'**

**STOREFRONT SPECS:**

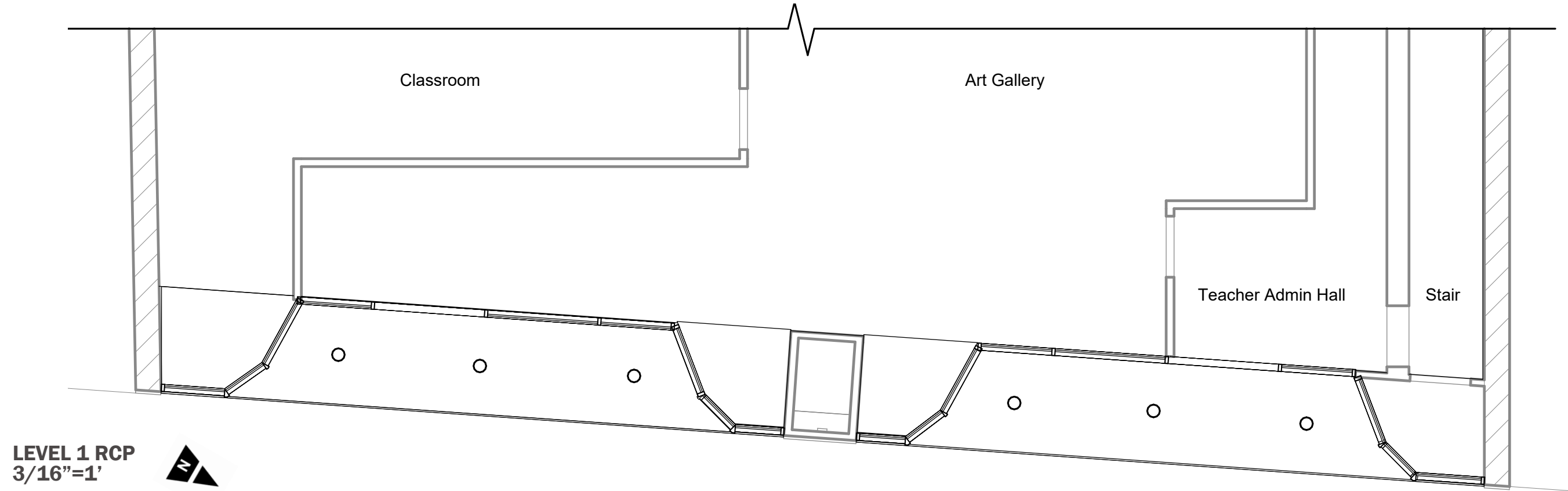
**Metal Group: M451T CG/SS/OG STOPS DN NEW SILL**

**D/S: 1    Frame Type: Standard**

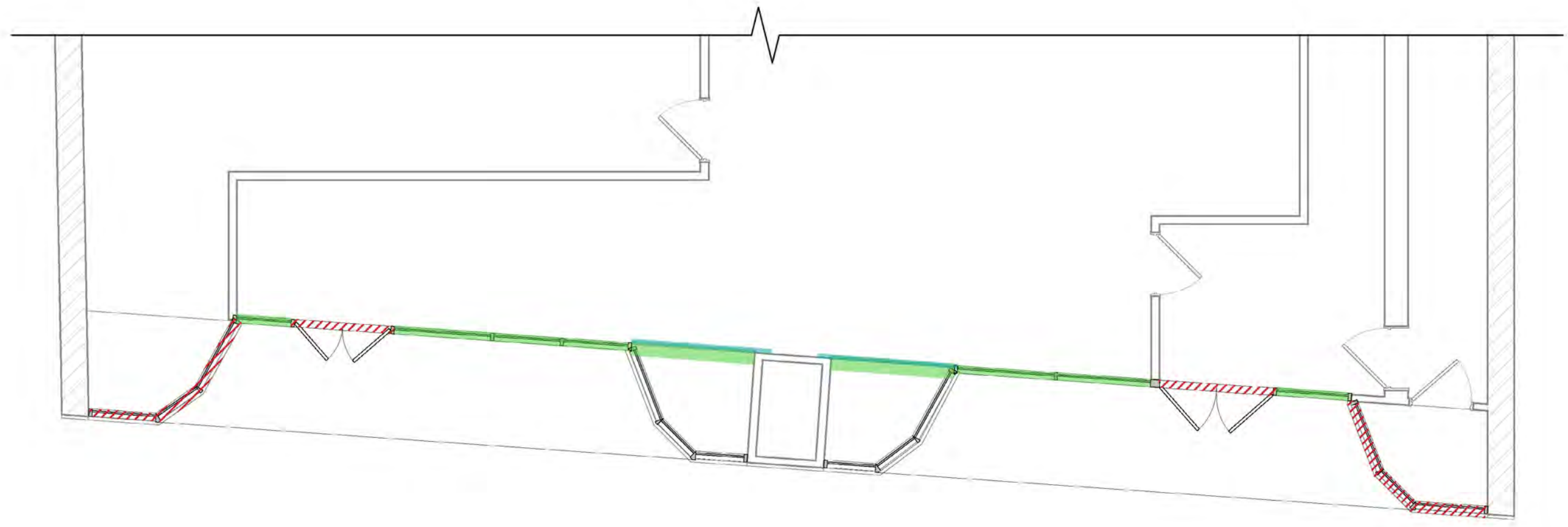
**Back Member Color: #22 BLACK : FLUROPON**




**Face Member Color: #22 BLACK : FLUROPON**

ASCENT AT BROADWAY - PROPOSED STOREFRONT



# WINDOW PRIVACY / SECURITY SCREENS

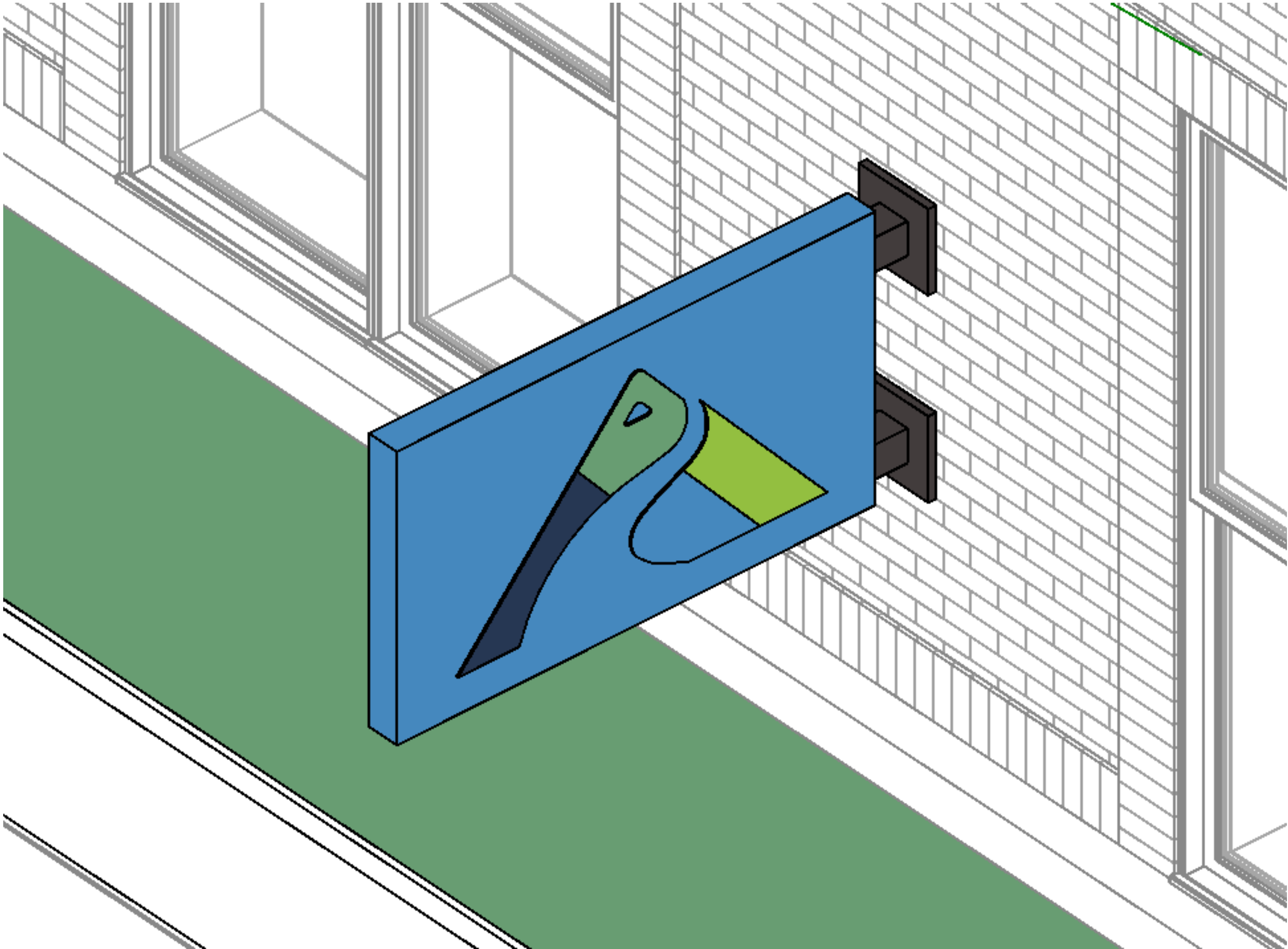


-  Privacy Window Cling
-  Automatic Roller Shade
-  Plexiglass Barrier

# AREAS OF INSTALLATION



SIGNAGE CONCEPT



# RENDERINGS



## RENDERINGS - DAY VS NIGHT



DAYTIME WITH SHADING



NIGHTTIME WITH LIGHTING

# Case 26-030

## Certificate of Appropriateness

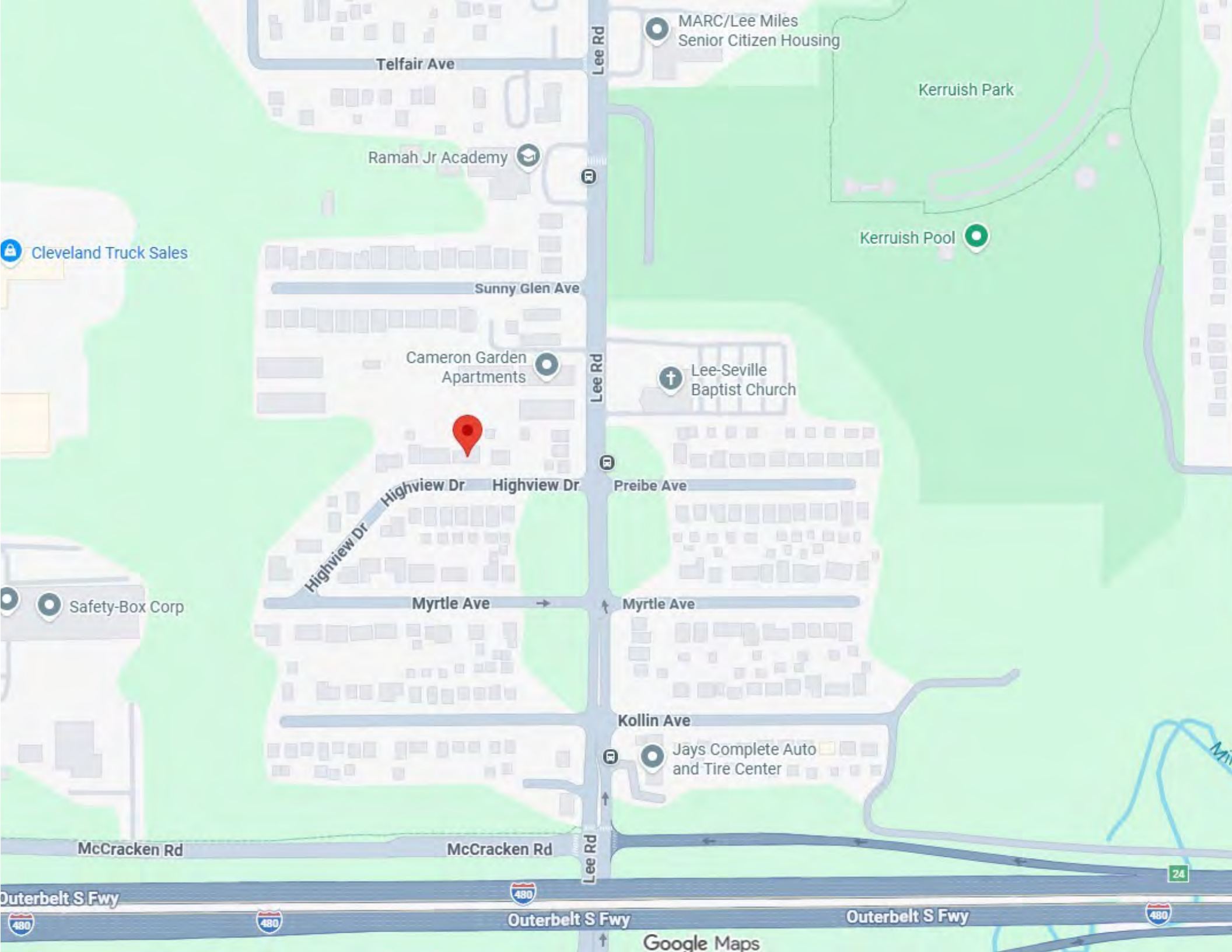
Arthur Bussey Development  
Historic District

# 16401 Highview Drive

## Window Installation

Project Representatives: Ryan Hume, Window Nation  
Ward 1: Councilmember Jones





MARC/Lee Miles Senior Citizen Housing

Kerruish Park

Kerruish Pool

Telfair Ave

Lee Rd

Ramah Jr Academy

RD

Cleveland Truck Sales

Sunny Glen Ave

Cameron Garden Apartments

Lee Rd

Lee-Seville Baptist Church

Highview Dr

Preibe Ave

Highview Dr

Myrtle Ave

Myrtle Ave

Safety-Box Corp

Kollin Ave

Jays Complete Auto and Tire Center

McCracken Rd

McCracken Rd

Lee Rd

Outerbelt S Fwy

Outerbelt S Fwy

Outerbelt S Fwy

Google Maps

Customer Name – Andre Osborn

Floor - First

Address – 16401 Highview Dr

### Site Plans – Window Nation

#### Window Replacement – 18 Windows

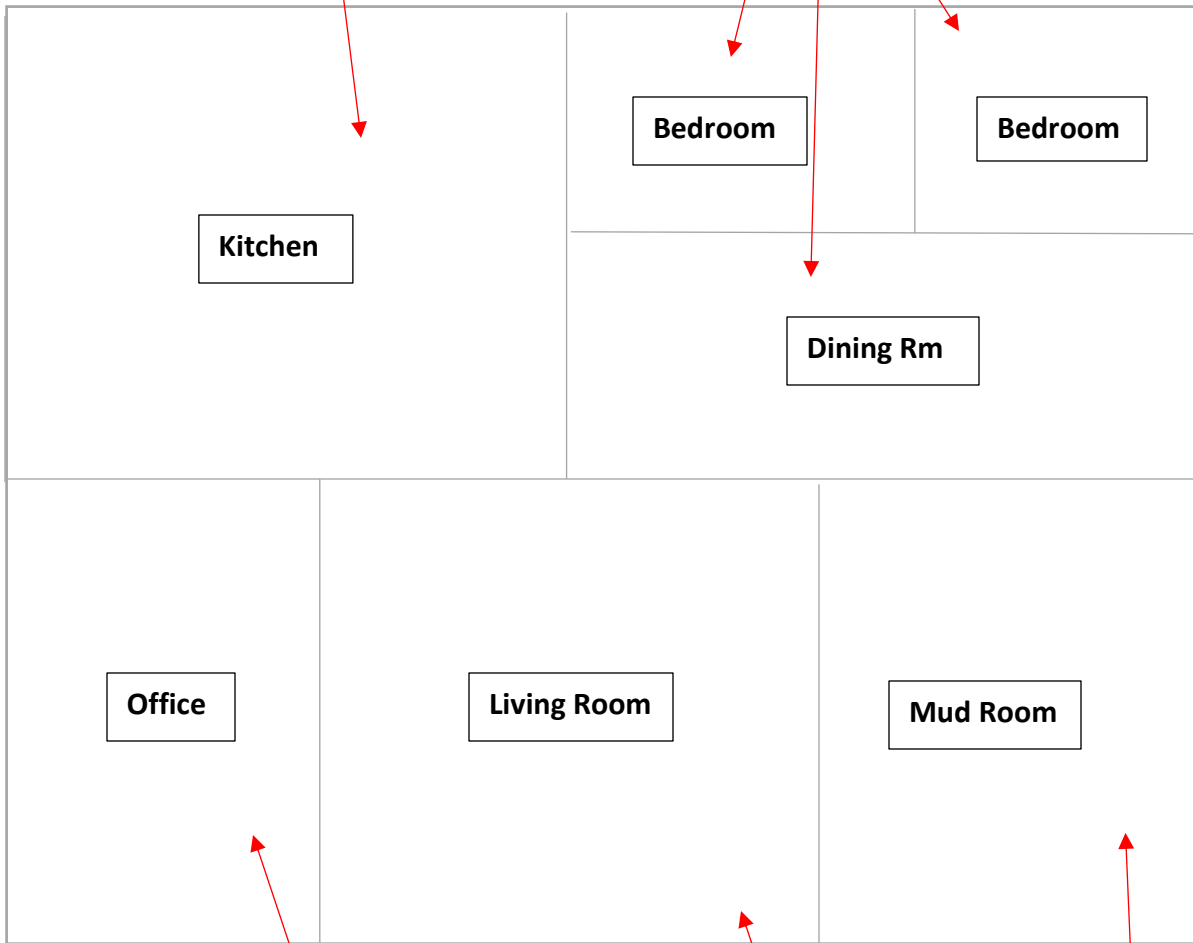
Double Hung = 9  
Slider = 6  
Picture = 3

Bedroom – Replace 3 slider windows, measuring 71"x23".

Bedroom – Replace 3 slider windows, 1 measuring 71"x23", other 2 71"x29"

Dining Rm – Replace 1 picture window, measuring 53"x49". Replace 2 double hung windows, measuring 19"x49"

Replace 2 double hung windows, measuring 52"x37"



Bedroom

Bedroom

Kitchen

Dining Rm

Office

Living Room

Mud Room

Replace 2 double hung windows, measuring 35"x61".

Replace 1 picture window, measuring 69"x61".

Replace 2 double hung windows, measuring 44"x61", and 1 picture window, measuring 89"x61".

Replace 1 double hung window, measuring 52"x38".

4350 Renaissance Parkway  
Warrensville Heights, OH 44128  
License #: 2089965



**Date of Agreement:**  
January 27, 2026  
Customer ID: PR2031106  
Contract No: WN-CLE-182408-0  
Sales: 866-446-2846  
Service: 866-217-9582

**PRODUCT SPECIFICATIONS**

<b>Buyer Address:</b> Andre Osborn 16401 Highview Dr Cleveland, OH 44128	<b>Buyer Contact Information:</b> (216) 924-3867 2164718223	<b>Buyer Email Information:</b> andrelosborn@yahoo.com
---	---	---

Buyer(s) listed above hereby jointly and severally agrees to purchase the goods and/or services listed on the accompanying specification sheets, in accordance with the prices and terms described in the Custom Remodeling and Improvement and the Product Specifications (collectively, this "Agreement").

Windows - Envision inclusions: Beveled exterior frame, Fusion welded frame and sashes, Limit lock on double hung windows, dual-fin wool pile weather stripping, cam-action lock, special formula uPVC, Certi-Force balance system on double hung window, Integral lift rail, Endur warm edge spacer, reinforced fiberglass composite in meeting rail and bottom sash rail, comfort foam insulation, Dura-Sill engineered sloped sill, Soft-Seal straddle gasket, exterior custom capping, installation by a certified crew, clean up and haul away of all job related debris.

DO NOT SIGN THIS CONTRACT IF THERE ARE ANY BLANK SPACES.

It is agreed and understood by and between parties that the Product Specifications, along with the Custom Remodeling and Improvement Agreement, constitutes the entire understanding between the parties, and replaces any and all prior negotiations, representations, or agreements, either written or oral. The Product Specifications may not be changed, modified, or varied in any way (with exception that installation materials may be substituted with similar products when inventory shortages exist) unless such changes are in writing and signed by both Buyer(s) and Window Nation, LLC. Buyer(s) hereby acknowledge that Buyer(s) has read the Product Specifications.

**I have read and received each page of this Product Specification.**

**Window Nation**

Signature of Exterior Design Consultant  
Ryan Hume - License #: 2089965

**Buyer(s)**

Buyer Name: Andre Osborn

**YOU, THE BUYER(S), MAY CANCEL THIS TRANSACTION AT ANY TIME PRIOR TO MIDNIGHT OF THE THIRD BUSINESS DAY AFTER THE DATE OF THIS TRANSACTION. SEE THE ATTACHED NOTICE OF CANCELLATION FORM FOR AN EXPLANATION OF THIS RIGHT.**


PRODUCT SPECIFICATIONS

<b>Buyer Address:</b> Andre Osborn 16401 Highview Dr Cleveland, OH 44128	<b>Buyer Contact Information:</b> (216) 924-3867 2164718223	<b>Buyer Email Information:</b> andrelosborn@yahoo.com
---	---	---

Work Order Details:


**1**      **Model: Envision W:89.0" H: 61.0" Location: 1st Floor, Living Room Quantity: 1**

Style: Picture Window  
Color: Interior White > Exterior White  
Glass: Extreme 2 Pane/Lowe & Argon > Standard > Not OBS  
Grids: No Grids  
Screen: No Screen




**2**      **Model: Envision W:44.0" H: 61.0" Location: 1st Floor, Living Room Quantity: 2**

Style: Double Hung  
Color: Interior White > Exterior White  
Configuration: Standard Sash Configuration  
Grids: No Grids  
Glass: Extreme 2 Pane/Lowe & Argon > Standard > Not OBS  
Screen: Flex Screen (Full)




**3**      **Model: Envision W:69.0" H: 61.0" Location: 1st Floor, Office Quantity: 1**

Style: Picture Window  
Color: Interior White > Exterior White  
Glass: Extreme 2 Pane/Lowe & Argon > Standard > Not OBS  
Grids: No Grids  
Screen: No Screen



**4**      **Model: Envision W:35.0" H: 61.0" Location: 1st Floor, Office Quantity: 2**

Style: Double Hung  
Color: Interior White > Exterior White  
Configuration: Standard Sash Configuration  
Grids: No Grids  
Glass: Extreme 2 Pane/Lowe & Argon > Standard > Not OBS  
Screen: Flex Screen (Full)





**Date of Agreement:**  
January 27, 2026  
Customer ID: PR2031106  
Contract No: WN-CLE-182408-0  
Sales: 866-446-2846  
Service: 866-217-9582


PRODUCT SPECIFICATIONS

<b>Buyer Address:</b> Andre Osborn 16401 Highview Dr Cleveland, OH 44128	<b>Buyer Contact Information:</b> (216) 924-3867 2164718223	<b>Buyer Email Information:</b> andrelosborn@yahoo.com
---	---	---

Work Order Details:


**5**      **Model: Envision W:71.0" H: 23.0" Location: 1st Floor, Bedroom Quantity: 3**

Style: 2 Part Slider  
Color: Interior White > Exterior White  
Glass: Extreme 2 Pane/Lowe & Argon > Standard > Not OBS  
Grids: No Grids  
Screen: Flex Screen (Full)  
Description: 1




**6**      **Model: Envision W:71.0" H: 23.0" Location: 1st Floor, Bedroom Quantity: 1**

Style: 2 Part Slider  
Color: Interior White > Exterior White  
Glass: Extreme 2 Pane/Lowe & Argon > Standard > Not OBS  
Grids: No Grids  
Screen: Flex Screen (Full)  
Description: 2



**7**      **Model: Envision W:53.0" H: 49.0" Location: 1st Floor, Dining Room Quantity: 1**

Style: Picture Window  
Color: Interior White > Exterior White  
Glass: Extreme 2 Pane/Lowe & Argon > Standard > Not OBS  
Grids: No Grids  
Screen: No Screen





**Date of Agreement:**  
January 27, 2026  
Customer ID: PR2031106  
Contract No: WN-CLE-182408-0  
Sales: 866-446-2846  
Service: 866-217-9582


PRODUCT SPECIFICATIONS

<b>Buyer Address:</b> Andre Osborn 16401 Highview Dr Cleveland, OH 44128	<b>Buyer Contact Information:</b> (216) 924-3867 2164718223	<b>Buyer Email Information:</b> andrelosborn@yahoo.com
---	---	---

Work Order Details:


**8**      **Model: Envision W:19.0" H: 49.0" Location: 1st Floor, Dining Room Quantity: 2**

Style: Double Hung  
Color: Interior White > Exterior White  
Configuration: Standard Sash Configuration  
Grids: No Grids  
Glass: Extreme 2 Pane/Lowe & Argon > Standard > Not OBS  
Screen: Flex Screen (Full)




**9**      **Model: Envision W:71.0" H: 29.0" Location: 1st Floor, Bedroom Quantity: 2**

Style: 2 Part Slider  
Color: Interior White > Exterior White  
Glass: Extreme 2 Pane/Lowe & Argon > Standard > Not OBS  
Grids: No Grids  
Screen: Flex Screen (Full)  
Description: 3



**10**      **Model: Envision W:52.0" H: 37.0" Location: 1st Floor, Kitchen Quantity: 1**

Style: Double Hung  
Color: Interior White > Exterior White  
Configuration: Standard Sash Configuration  
Grids: No Grids  
Glass: Extreme 2 Pane/Lowe & Argon > Standard > Not OBS  
Screen: Flex Screen (Full)



4350 Renaissance Parkway  
Warrensville Heights, OH 44128  
License #: 2089965



**Date of Agreement:**  
January 27, 2026  
Customer ID: PR2031106  
Contract No: WN-CLE-182408-0  
Sales: 866-446-2846  
Service: 866-217-9582


PRODUCT SPECIFICATIONS

<b>Buyer Address:</b> Andre Osborn 16401 Highview Dr Cleveland, OH 44128	<b>Buyer Contact Information:</b> (216) 924-3867 2164718223	<b>Buyer Email Information:</b> andrelosborn@yahoo.com
---	---	---

Work Order Details:


**11**      **Model: Envision W:52.0" H: 37.0" Location: 1st Floor, Kitchen sink Quantity: 1**

Style: Double Hung  
Color: Interior White > Exterior White  
Configuration: Standard Sash Configuration  
Grids: No Grids  
Glass: Extreme 2 Pane/Lowe & Argon > Standard > Not OBS  
Screen: Flex Screen (Full)



**12**      **Model: Envision W:52.0" H: 38.0" Location: 1st Floor, Mud room Quantity: 1**

Style: Double Hung  
Color: Interior White > Exterior White  
Configuration: Standard Sash Configuration  
Grids: No Grids  
Glass: Extreme 2 Pane/Lowe & Argon > Standard > Not OBS  
Screen: Flex Screen (Full)



**Additional Items:**  
(18) EPA Lead Containment Install - Window (Per Opening)

4350 Renaissance Parkway  
Warrensville Heights, OH 44128  
License #: 2089965



**Date of Agreement:**  
January 27, 2026  
Customer ID: PR2031106  
Contract No: WN-CLE-182408-0  
Sales: 866-446-2846  
Service: 866-217-9582

PRODUCT SPECIFICATIONS

<b>Buyer Address:</b> Andre Osborn 16401 Highview Dr Cleveland, OH 44128	<b>Buyer Contact Information:</b> (216) 924-3867 2164718223	<b>Buyer Email Information:</b> andrelosborn@yahoo.com
---	---	---

**Special Instructions:**

None

**Installation Details:**

Window Removal Type: Metal Exterior Trim: High Performance Trim Coil Exterior Trim Color: Black Sealant: OSI Quad Max Insulation Around Window: OSI Quad Foam Clean Up and Haul Away: Yes	Additional products needed in the future: No Customer agrees to allow Window Nation to post a yard sign until 30 days after install: Yes Year house was built: 1957 EPA Lead Containment Required: Yes EPA Lead Testing Required: No HOA Approval Required: No
--	---

4350 Renaissance Parkway  
 Warrensville Heights, OH 44128  
 License #: 2089965



**Date of Agreement:**  
 January 27, 2026  
**Customer ID:** PR2031106  
**Contract No:** WN-CLE-182408-0  
**Sales:** 866-446-2846  
**Service:** 866-217-9582

**CUSTOM REMODELING AND IMPROVEMENT AGREEMENT**

<b>Buyer Address:</b> Andre Osborn 16401 Highview Dr Cleveland, OH 44128	<b>Buyer Contact Information:</b> (216) 924-3867 2164718223	<b>Buyer Email Information:</b> andrelosborn@yahoo.com
---	---	---

\_\_\_\_\_

Buyer(s) listed above hereby jointly and severally agrees to purchase the goods and/or services of Window Nation, LLC. ("Contractor") in accordance with the prices and terms described in this document and the Product Specifications, which are incorporated as part of the Agreement (collectively, this "Agreement"). This Agreement represents a cash sale of goods and services. Buyer(s) agrees to pay the cost of the goods and services purchased as described herein, regardless of timing or approval of any financing Buyer(s) may seek for their purchase.

<table style="width: 100%; border-collapse: collapse;"> <tr><td>Sale Total</td><td align="right">\$24,471</td></tr> <tr><td>Setup &amp; Disposal Fee</td><td align="right">\$349</td></tr> <tr><td>Permit Administration</td><td align="right">\$180</td></tr> <tr><td>Total Sale Price</td><td align="right">\$25,000</td></tr> <tr><td>Sales Tax (0.0%)</td><td align="right">\$0</td></tr> <tr><td>Total Amount Due</td><td align="right">\$25,000</td></tr> <tr><td>Down Payment</td><td align="right">\$0</td></tr> <tr><td>Down Payment Type</td><td align="right">Cash</td></tr> <tr><td>Measure Tech to Collect Deposit</td><td align="right">NO</td></tr> <tr><td>Balance Due</td><td align="right">\$25,000</td></tr> <tr><td>Amount Financed</td><td align="right">\$25,000</td></tr> <tr><td>COD (Payable at time of install)</td><td align="right">\$0</td></tr> </table>	Sale Total	\$24,471	Setup & Disposal Fee	\$349	Permit Administration	\$180	Total Sale Price	\$25,000	Sales Tax (0.0%)	\$0	Total Amount Due	\$25,000	Down Payment	\$0	Down Payment Type	Cash	Measure Tech to Collect Deposit	NO	Balance Due	\$25,000	Amount Financed	\$25,000	COD (Payable at time of install)	\$0	<p align="center"><b>Estimate Project Start: 10-12 Weeks</b>  <b>Estimate Project Finish: 1 to 3 days after start</b></p> <p>Buyer(s) acknowledge that definite start and completion dates are NOT of the essence. Delays beyond Contractors control not included in calculating timeframes. See Section 6 of the Terms and Conditions.</p>
Sale Total	\$24,471																								
Setup & Disposal Fee	\$349																								
Permit Administration	\$180																								
Total Sale Price	\$25,000																								
Sales Tax (0.0%)	\$0																								
Total Amount Due	\$25,000																								
Down Payment	\$0																								
Down Payment Type	Cash																								
Measure Tech to Collect Deposit	NO																								
Balance Due	\$25,000																								
Amount Financed	\$25,000																								
COD (Payable at time of install)	\$0																								

This Agreement constitutes the entire agreement and understanding between the parties, and this Agreement replaces any and all prior negotiations, representations, or agreements, either written or oral. No amendment, modification or waiver of this Agreement shall be valid or effective unless in writing and signed by both parties. Buyer(s) hereby acknowledge that Buyer(s) 1) has read the entire Agreement and has received a completed, signed, and dated copy of this Agreement, including the two accompanying Notice of Cancellation forms, on the date first written above and 2) was orally informed of his/her right to cancel this transaction.

Buyer(s) also agrees and understands that if Buyer(s) finance the work with a third-party, the terms of that financing will be contained on separate documents, including any finance charge. Price includes all discounts and promotions.

**I have read and received each page of this Agreement.**

**Window Nation**

\_\_\_\_\_  
 Signature of Exterior Design Consultant  
 Ryan Hume - License #: 2089965

**Buyer(s)**

\_\_\_\_\_  
 Buyer Name: Andre Osborn

**YOU, THE BUYER(S), MAY CANCEL THIS TRANSACTION AT ANY TIME PRIOR TO MIDNIGHT OF THE THIRD BUSINESS DAY AFTER THE DATE OF THIS TRANSACTION. SEE THE ATTACHED NOTICE OF CANCELLATION FORM FOR AN EXPLANATION OF THIS RIGHT.**

# Dealer Quotation - Quote 666708

10250 Philipp Pkwy  
 Streetsboro, OH 44241  
[www.soft-lite.com](http://www.soft-lite.com)

Phone: (330) 528 3400  
 Fax: (330) 528 3501

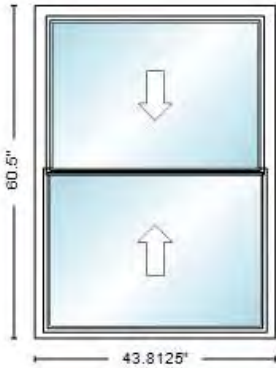
QUOTE EXPIRES 30 DAYS FROM REQUESTED
--

Bid For
<b>WINDOW NATION - CLE DELIVERY</b> 1910 SUMMIT COMMERCE PARKWAY TWINSBURG, OH 44087 Business: 410 766 8488 Fax:

Shipping Address
1910 SUMMIT COMMERCE PARKWAY TWINSBURG, OH 44087  Quote Name: P0026925 OSBORN 16401

Customer Number	PO	Required Date	Quoted By
714460	P0026925 OSBORN	2/5/2026	hbissell

Line	Qty	Description	Each	Total
10-1	1	BAIN Double Hung Double Hung 43.8125 x 60.5		



**NFRC Values**

<b>U-FACTOR</b>	<b>SHGC</b>
0.27	0.28
<b>VT</b>	<b>CR</b>
0.52	60

Viewed from Inside  
 Base Color = Soft-Lite White  
 Full Flex Screen Bettervue  
 Sill Expander = Y  
 Lock Type = Standard  
 Lock Color = Soft-Lite White  
 Foam Fill = Spray Foam  
 Install Note = Yes  
 1FLR LIVING RM  
 Fiberglass Reinforcement  
 Double Locks = Y  
 Glass Package = Lowe & Argon  
 Lowe Type = Loe 270  
 Argon Gas  
 Super Spacer  
 Single Strength  
 Mull Type = NMM  
 Vertical Aligned With 0" thick, 60.5" length

**Comment**

1FLR LIVING RM

**Breakdown**

Base Price

Upper Sash  
GLASS.PKG.KP

Lower Sash  
GLASS.PKG.LK

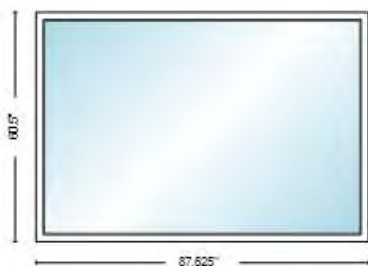
SCREEN.FULL

Upper Sash  
GLASS.SPACER.KP

Lower Sash  
GLASS.SPACER.LK

Customer Number	PO	Required Date	Quoted By
714460	P0026925 OSBORN	1/1/0001	hbissell

Line	Qty	Description	Each	Total
10-2	1	BAIN Direct Set 87.625 x 60.5		



**NFRC Values**

<b>U-FACTOR</b>	<b>SHGC</b>
0.25	0.3
<b>VT</b>	<b>CR</b>
0.55	61

Viewed from Inside  
 Base Color = Soft-Lite White  
 Sill Expander = Y  
 Foam Fill = Spray Foam  
 Install Note = Yes  
 IFLR LIVING RM  
 Glass Package = Lowe & Argon  
 Lowe Type = Loe 270  
 Argon Gas  
 Super Spacer  
 Heavy Strength  
 Heavy Strength Type = 4MM  
 Mull Type = NMM  
 Mulls 1: Vertical Aligned With 0" thick, 60.5" length  
 Mulls 2: Vertical Aligned With 0" thick, 60.5" length

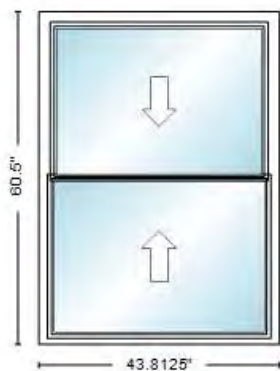
**Comment**

IFLR LIVING RM

**Breakdown**

Base Price  
 GLASS.PKG  
 GLASS.SPACER

Line	Qty	Description	Each	Total
10-3	1	BAIN Double Hung Double Hung 43.8125 x 60.5		



**NFRC Values**

<b>U-FACTOR</b>	<b>SHGC</b>
0.27	0.28
<b>VT</b>	<b>CR</b>
0.52	60

Viewed from Inside  
 Base Color = Soft-Lite White  
 Full Flex Screen Bettervue  
 Sill Expander = Y  
 Lock Type = Standard  
 Lock Color = Soft-Lite White  
 Foam Fill = Spray Foam  
 Install Note = Yes  
 IFLR LIVING RM  
 Fiberglass Reinforcement  
 Double Locks = Y  
 Glass Package = Lowe & Argon  
 Lowe Type = Loe 270  
 Argon Gas  
 Super Spacer  
 Single Strength  
 Mull Type = NMM  
 Vertical Aligned With 0" thick, 60.5" length

**Comment**

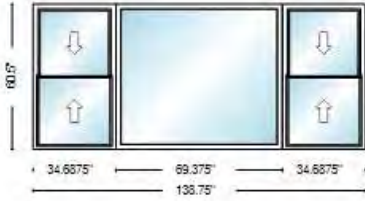
IFLR LIVING RM

**Breakdown**

Base Price  
 Upper Sash  
 GLASS.PKG.KP  
 Lower Sash  
 GLASS.PKG.LK  
 SCREEN.FULL  
 Upper Sash  
 GLASS.SPACER.KP  
 Lower Sash  
 GLASS.SPACER.LK

Customer Number	PO	Required Date	Quoted By
714460	P0026925 OSBORN	1/1/0001	hbissell

Line	Qty	Description	Each	Total
20-1	1	BAI Multilite Window 138.75 x 60.5		



**NFRC Values**

<b>U-FACTOR</b>	<b>SHGC</b>
0.25	0.3
<b>VT</b>	<b>CR</b>
0.55	61

Viewed from Inside  
 Base Color = Soft-Lite White  
 Unit 1, 3: Full Flex Screen Bettervue  
 Unit 1, 3: Sill Expander = Y  
 Unit 2: Sill Expander = Y  
 Lock Type = Standard  
 Lock Color = Soft-Lite White  
 Unit 1, 3: Foam Fill = Spray Foam  
 Unit 1, 3: Install Note = Yes  
 Unit 1, 3: IFLR OFFICE  
 Unit 1, 3: Fiberglass Reinforcement  
 Unit 1, 3: Double Locks = Y  
 Unit 2: Foam Fill = Spray Foam  
 Unit 2: Install Note = Yes  
 Unit 2: IFLR OFFICE  
 Unit 1 Lower, 1 Upper, 1 Lower, 1 Upper: Glass Package = Lowe & Argon  
 Unit 1 Lower, 1 Upper, 1 Lower, 1 Upper: Low Type = Loe 270  
 Unit 1 Lower, 1 Upper, 1 Lower, 1 Upper: Argon Gas  
 Unit 1 Lower, 1 Upper, 1 Lower, 1 Upper: Super Spacer  
 Unit 1 Lower, 1 Upper, 1 Lower, 1 Upper: Single Strength  
 Unit 2: Glass Package = Lowe & Argon  
 Unit 2: Low Type = Loe 270  
 Unit 2: Argon Gas  
 Unit 2: Super Spacer  
 Unit 2: Heavy Strength  
 Unit 2: Heavy Strength Type = 4MM  
 Mull Type = JSM  
 Mulls 1: Vertical Factory 0" thick, 60.5" length  
 Mulls 2: Vertical Factory 0" thick, 60.5" length

**Comment**

IFLR OFFICE

**Breakdown**

- Unit 1 Base Price

---

- Unit 1 Upper Sash  
GLASS.PKG.KP

---

- Unit 1 Lower Sash  
GLASS.PKG.LK

---

- Unit 1 SCREEN.FULL

---

- Unit 1 Upper Sash  
GLASS.SPACER.KP

---

- Unit 1 Lower Sash  
GLASS.SPACER.LK

---

- Unit 2 Base Price

---

- Unit 2 GLASS.PKG

---

- Unit 2 GLASS.SPACER

---

- Unit 3 Base Price

---

- Unit 3 Upper Sash  
GLASS.PKG.KP

---

- Unit 3 Lower Sash  
GLASS.PKG.LK

---

- Unit 3 SCREEN.FULL

---

- Unit 3 Upper Sash  
GLASS.SPACER.KP

---

- Unit 3 Lower Sash  
GLASS.SPACER.LK

---

- Base Price Multi-Lite

Customer Number	PO	Required Date	Quoted By
714460	P0026925 OSBORN	1/1/0001	hbissell

Line	Qty	Description	Each	Total
30-1	3	BAIN Double Slider XX 70.25 x 21.75		



**NFRC Values**

<b>U-FACTOR</b>	<b>SHGC</b>
0.27	0.29
<b>VT</b>	<b>CR</b>
0.53	61

Viewed from Inside  
 Base Color = Soft-Lite White  
 Full Flex Screen Bettervue  
 Sill Expander = Y  
 Lock Type = Standard  
 Lock Color = Soft-Lite White  
 Foam Fill = Spray Foam  
 Install Note = Yes  
 FRNT CORNER BED  
 Fiberglass Reinforcement  
 Primary Sash = R  
 Glass Package = Lowe & Argon  
 Lowe Type = Loe 270  
 Argon Gas  
 Super Spacer  
 Single Strength

**Comment**  
 FRNT CORNER  
 BED

**Breakdown**

Base Price  
 Left Sash  
 GLASS.PKG.L  
 Right Sash  
 GLASS.PKG.R  
 SCREEN.FULL  
 Left Sash  
 GLASS.SPACER.L  
 Right Sash  
 GLASS.SPACER.R

Line	Qty	Description	Each	Total
40-1	1	BAIN Double Slider XX 70.25 x 21.75		



**NFRC Values**

<b>U-FACTOR</b>	<b>SHGC</b>
0.27	0.29
<b>VT</b>	<b>CR</b>
0.53	61

Viewed from Inside  
 Base Color = Soft-Lite White  
 Full Flex Screen Bettervue  
 Sill Expander = Y  
 Lock Type = Standard  
 Lock Color = Soft-Lite White  
 Foam Fill = Spray Foam  
 Install Note = Yes  
 SIDE MID BED  
 Fiberglass Reinforcement  
 Primary Sash = R  
 Glass Package = Lowe & Argon  
 Lowe Type = Loe 270  
 Argon Gas  
 Super Spacer  
 Single Strength

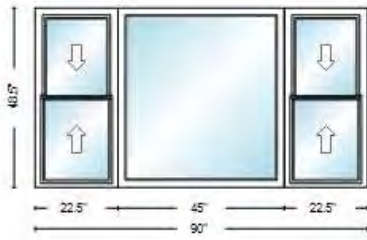
**Comment**  
 SIDE MID BED

**Breakdown**

Base Price  
 Left Sash  
 GLASS.PKG.L  
 Right Sash  
 GLASS.PKG.R  
 SCREEN.FULL  
 Left Sash  
 GLASS.SPACER.L  
 Right Sash  
 GLASS.SPACER.R

Customer Number	PO	Required Date	Quoted By
714460	P0026925 OSBORN	1/1/0001	hbissell

Line	Qty	Description	Each	Total
50-1	1	BAI Multilite Window 90 x 48.5		



**NFRC Values**

<b>U-FACTOR</b>	<b>SHGC</b>
0.25	0.3
<b>VT</b>	<b>CR</b>
0.55	61

Viewed from Inside  
 Base Color = Soft-Lite White  
 Unit 1, 3: Full Flex Screen Bettervue  
 Unit 1, 3: Sill Expander = Y  
 Unit 2: Sill Expander = Y  
 Lock Type = Standard  
 Lock Color = Soft-Lite White  
 Unit 1, 3: Foam Fill = Spray Foam  
 Unit 1, 3: Install Note = Yes  
 Unit 1, 3: IFLR DINING RM  
 Unit 1, 3: Fiberglass Reinforcement  
 Unit 2: Foam Fill = Spray Foam  
 Unit 2: Install Note = Yes  
 Unit 2: IFLR DINING RM  
 Unit 1 Lower, 1 Upper, 1 Lower, 1 Upper: Glass Package = Lowe & Argon  
 Unit 1 Lower, 1 Upper, 1 Lower, 1 Upper: Lowe Type = Loe 270  
 Unit 1 Lower, 1 Upper, 1 Lower, 1 Upper: Argon Gas  
 Unit 1 Lower, 1 Upper, 1 Lower, 1 Upper: Super Spacer  
 Unit 1 Lower, 1 Upper, 1 Lower, 1 Upper: Single Strength  
 Unit 2: Glass Package = Lowe & Argon  
 Unit 2: Lowe Type = Loe 270  
 Unit 2: Argon Gas  
 Unit 2: Super Spacer  
 Unit 2: Double Strength  
 Mull Type = JSM  
 Mulls 1: Vertical Factory 0" thick, 48.5" length  
 Mulls 2: Vertical Factory 0" thick, 48.5" length

**Comment**  
 IFLR DINING RM

**Breakdown**

---

Unit 1 Base Price

---

Unit 1 Upper Sash  
GLASS.PKG.KP

---

Unit 1 Lower Sash  
GLASS.PKG.LK

---

Unit 1 SCREEN.FULL

---

Unit 1 Upper Sash  
GLASS.SPACER.KP

---

Unit 1 Lower Sash  
GLASS.SPACER.LK

---

Unit 2 Base Price

---

Unit 2 GLASS.PKG

---

Unit 2 GLASS.SPACER

---

Unit 3 Base Price

---

Unit 3 Upper Sash  
GLASS.PKG.KP

---

Unit 3 Lower Sash  
GLASS.PKG.LK

---

Unit 3 SCREEN.FULL

---

Unit 3 Upper Sash  
GLASS.SPACER.KP

---

Unit 3 Lower Sash  
GLASS.SPACER.LK

---

Base Price Multi-Lite

Customer Number	PO	Required Date	Quoted By
714460	P0026925 OSBORN	1/1/0001	hbissell

Line	Qty	Description	Each	Total
60-1	1	BAIN Double Slider XX 71.25 x 22.75		



**NFRC Values**

<b>U-FACTOR</b>	<b>SHGC</b>
0.27	0.29
<b>VT</b>	<b>CR</b>
0.53	61

Viewed from Inside  
 Base Color = Soft-Lite White  
 Full Flex Screen Bettervue  
 Sill Expander = Y  
 Lock Type = Standard  
 Lock Color = Soft-Lite White  
 Foam Fill = Spray Foam  
 Install Note = Yes  
 BACK CORNR/SIDE  
 Fiberglass Reinforcement  
 Primary Sash = R  
 Glass Package = Lowe & Argon  
 Lowe Type = Loe 270  
 Argon Gas  
 Super Spacer  
 Single Strength

**Comment**

BACK  
 CORNER/SIDE

**Breakdown**

Base Price  
 Left Sash  
 GLASS.PKG.L  
 Right Sash  
 GLASS.PKG.R  
 SCREEN.FULL  
 Left Sash  
 GLASS.SPACER.L  
 Right Sash  
 GLASS.SPACER.R

Line	Qty	Description	Each	Total
70-1	1	BAIN Double Slider XX 70.25 x 21.75		



**NFRC Values**

<b>U-FACTOR</b>	<b>SHGC</b>
0.27	0.29
<b>VT</b>	<b>CR</b>
0.53	61

Viewed from Inside  
 Base Color = Soft-Lite White  
 Full Flex Screen Bettervue  
 Sill Expander = Y  
 Lock Type = Standard  
 Lock Color = Soft-Lite White  
 Foam Fill = Spray Foam  
 Install Note = Yes  
 BACK CORNR/REAR  
 Fiberglass Reinforcement  
 Primary Sash = R  
 Glass Package = Lowe & Argon  
 Lowe Type = Loe 270  
 Argon Gas  
 Super Spacer  
 Single Strength

**Comment**

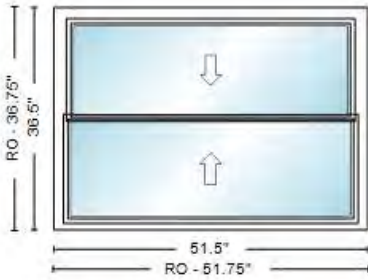
BACK  
 CORNR/REAR

**Breakdown**

Base Price  
 Left Sash  
 GLASS.PKG.L  
 Right Sash  
 GLASS.PKG.R  
 SCREEN.FULL  
 Left Sash  
 GLASS.SPACER.L  
 Right Sash  
 GLASS.SPACER.R

Customer Number	PO	Required Date	Quoted By
714460	P0026925 OSBORN	1/1/0001	hbissell

Line	Qty	Description	Each	Total
80-1	2	BAIN Double Hung Double Hung 51.5 x 36.5		



Viewed from Inside  
 Base Color = Soft-Lite White  
 Full Flex Screen Bettervue  
 Sill Expander = Y  
 Lock Type = Standard  
 Lock Color = Soft-Lite White  
 Foam Fill = Spray Foam  
 Install Note = Yes  
 IFLR KITCHEN  
 Fiberglass Reinforcement  
 Double Locks = Y  
 Glass Package = Lowe & Argon  
 Lowe Type = Loe 270  
 Argon Gas  
 Super Spacer  
 Single Strength

**Comment**  
IFLR KITCHEN

**Breakdown**

Base Price

Upper Sash  
GLASS.PKG.KP

Lower Sash  
GLASS.PKG.LK

SCREEN.FULL

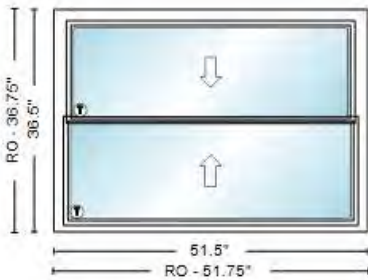
Upper Sash  
GLASS.SPACER.KP

Lower Sash  
GLASS.SPACER.LK

**NFRC Values**

<b>U-FACTOR</b>	<b>SHGC</b>
0.27	0.28
<b>VT</b>	<b>CR</b>
0.52	60

Line	Qty	Description	Each	Total
90-1	1	BAIN Double Hung Double Hung 51.5 x 36.5		



Viewed from Inside  
 Base Color = Soft-Lite White  
 Full Flex Screen Bettervue  
 Sill Expander = Y  
 Lock Type = Standard  
 Lock Color = Soft-Lite White  
 Foam Fill = Spray Foam  
 Install Note = Yes  
 IFLR MUD ROOM  
 Fiberglass Reinforcement  
 Double Locks = Y  
 Glass Package = Lowe & Argon  
 Lowe Type = Loe 270  
 Tempered = Yes  
 Argon Gas  
 Super Spacer  
 Double Strength

**Comment**  
IFLR MUD ROOM

**Breakdown**

Base Price

Upper Sash  
GLASS.PKG.KP

Lower Sash  
GLASS.PKG.LK

SCREEN.FULL

Upper Sash  
GLASS.SPACER.KP

Lower Sash  
GLASS.SPACER.LK

**NFRC Values**

<b>U-FACTOR</b>	<b>SHGC</b>
0.27	0.28
<b>VT</b>	<b>CR</b>
0.51	60

Total Qty: 14	Total Material	+	EMI	+	Processing	+	7.00 % Tax	=	Total
---------------	----------------	---	-----	---	------------	---	------------	---	-------

M&I Labor:











SLIDER  
/

Front  
bed

SLIDER

Side  
bed

Back  
bed

J



Sink

DH

DH

DH

Kit

Laundry

X



SLIDER

Back  
Bed

DH PICTURE DH

DR



LR

DH PICTURE DH DH PICTURE DH

SLIDER SLIDER

office

Front bed

# Case 26-031

Certificate of Appropriateness

Ohio City Historic District

## 4104 Whitman Avenue

**Revision to Previously Approved Renovation**

Project Representatives: Gary Murphy, Contractor

Ward 7: Councilmember Davis

Previous Case 24-032  
Approved April 11<sup>th</sup>, 2024



4104 Whitman Avenue,  
Cleveland, OH 44113

(Siding, Windows, Porch Renovation)

# 4104 Whitman - Windows (Feb 2026)

---



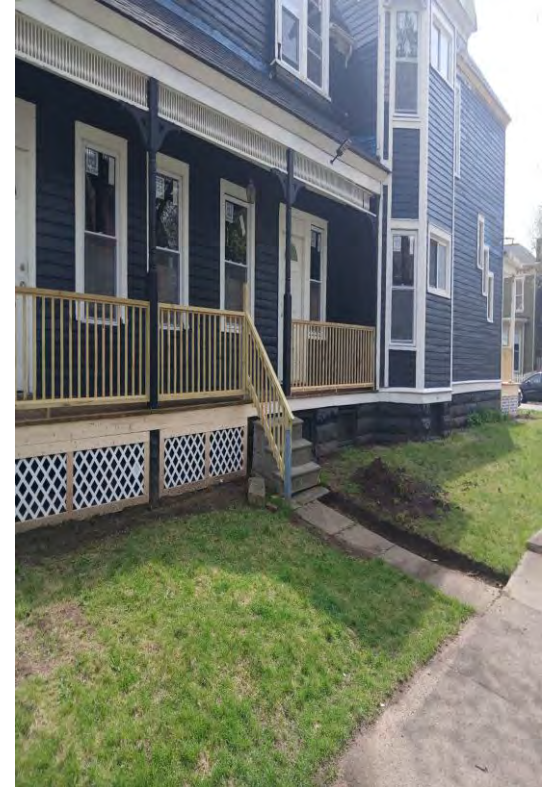
# 4104 Whitman - Windows (Feb 2026)

---



# 4104 Whitman - Siding (April 2026)

---



# 4104 Whitman - Windows (April 2026 - Vinyl)

---



# 4104 Whitman - Windows (April 2026 - Vinyl)

---



# 4104 Whitman - Siding (Hardie Board Upgrade)



To be purchased  
locally from Cleveland  
Lumber Supply

9410 Madison Ave,  
Cleveland, OH 44102

(216) 961-5550

**Hardie Plank 5.25 in. x 144 in. Smooth Fiber Cement Lap Siding**

# 4104 Whitman - Windows (Upgrade to Fiberglass)



## Pella® Fiberglass

Heavy-duty powder coat finish resists chalking and fading.

Provides **outstanding resistance** to water, wind and outside noise.

Resists dents, bends and breaks and delivers lasting **strength and durability.**



\*Pella's proprietary fiberglass material has displayed superior strength over wood, vinyl, aluminum, wood/plastic composites and other fiberglass materials used by leading national brands in tensile and 3-point bend tests performed in accordance with ASTM D538 and D790 testing standards.



**Pella Impervia Series 23-1/2-in x 35-1/2-in White Exterior White Interior Fiberglass New Construction Double Pane Glass Low-E Argon Double Hung Window (Full Screen Included)**

Item #5131523 | Model #1000010476

# 4104 Whitman - Windows (Upgrade to Fiberglass)



Visit a Pella Design Center at a Lowe's near you to see products in person.



Argon Gas Insulated, Screen Included, Tilttable Sash

# 4104 Whitman - Porch (Spindles)

---



# 4104 Whitman - Porch (Spindles - Community Examples)



4020 Whitman Ave



4020 Whitman Ave



4020 Whitman Ave

# 4104 Whitman - Porch (Spindles - Community Examples)



4101 Whitman Ave



4015 Whitman Ave

# 4104 Whitman - Porch (Spindles - Community Examples)



4120 Whitman Ave



4212 Whitman Ave

# 4104 Whitman - Porch (Spindles - Community Examples)



4202 Whitman Ave



4212 Whitman Ave

# 4104 Whitman - Porch (Spindles - Community Examples)



4215 Whitman Ave



4208 Whitman Ave

# 4104 Whitman - Porch (Spindles - Community Examples)



4207 Whitman Ave



4207 Whitman Ave

# 4104 Whitman - Porch (Spindles - Community Examples)



4115 Whitman Ave



4117 Whitman Ave

# Case 26-027

Certificate of Appropriateness

Public Auditorium/Mall Historic  
District

## Cleveland Public Auditorium and Conference Center 500 Lakeside Avenue

### Cleveland Charge Signage

Project Representatives: Damiane; Handa, Expedite the Diehl  
Ward 8: Councilmember Howse-Jones



# Stratus

onestratus.com

888.503.1569

**LOCATION NUMBER:**

245773

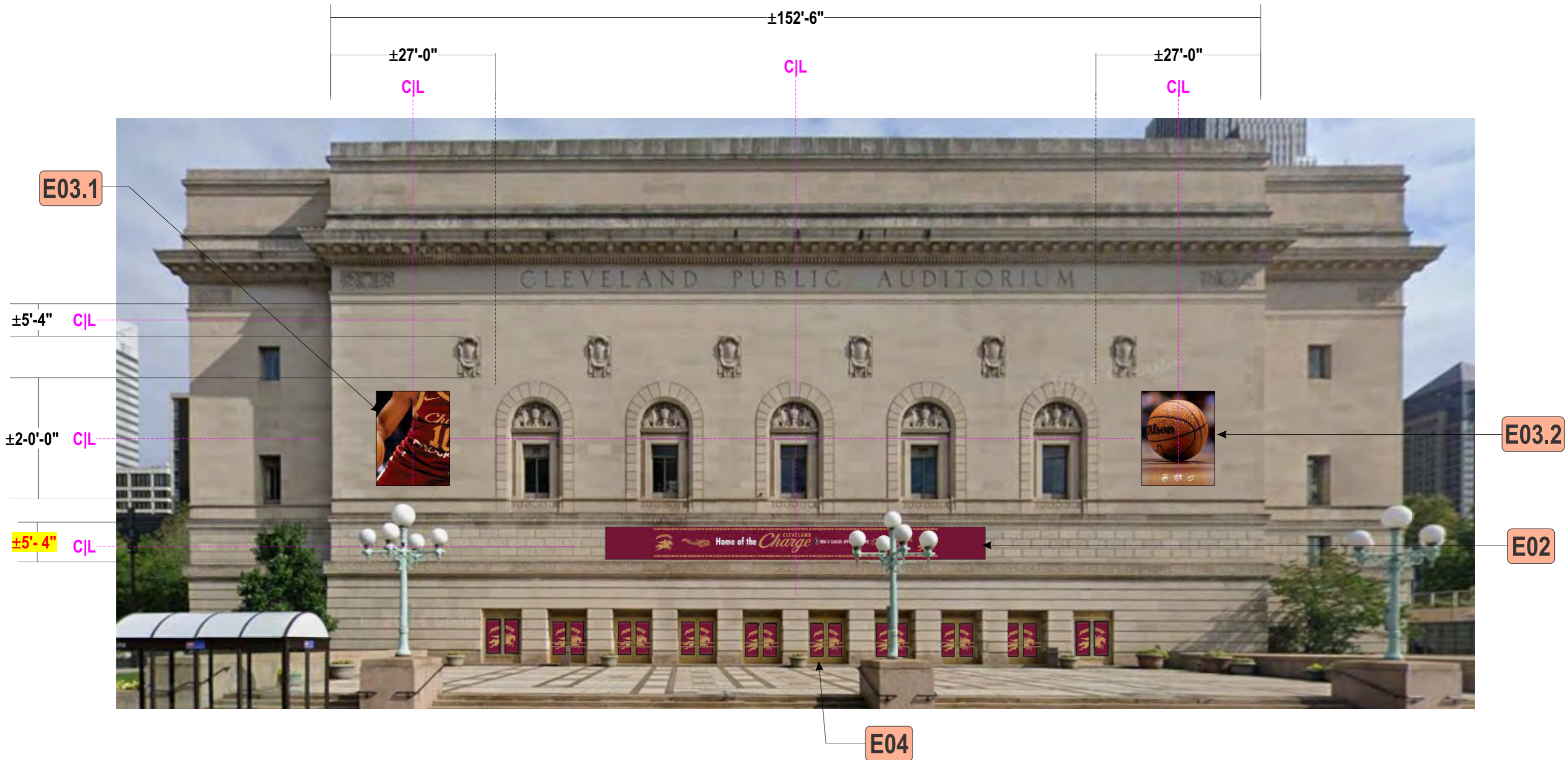
**SITE ADDRESS:**

1 Center Court  
Cleveland, OH 44115

 **Rocket Arena**

# NORTH ELEVATION

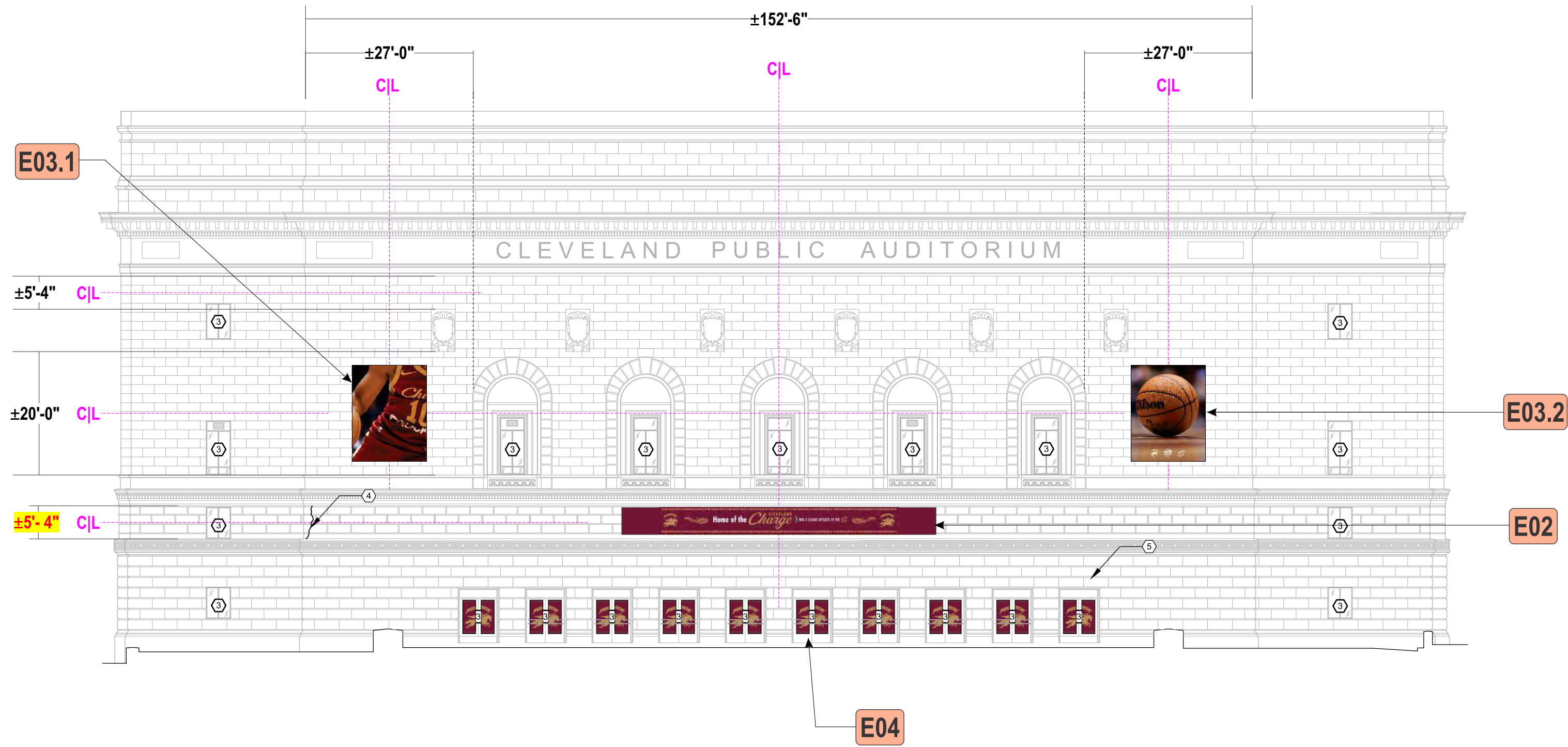
Scale: 1/16" = 1'-0"



# NORTH ELEVATION

Scale: 1/16" = 1'=0"

ALL SIGN SIZES HAVE BEEN CALCULATED OFF ARCHITECTURAL PRINTS AS SHOWN





±4'-4"

±50'-9"



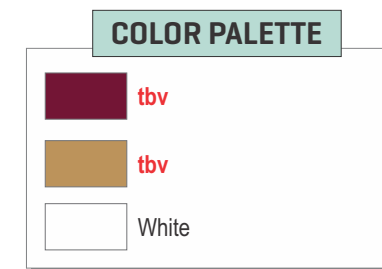
**BANNER:** 12 oz. Mesh banner material (85% material & 15% holes)  
w/ a reinforced hem

**GRAPHICS:** Digitally printed graphics to match colors shown

**INSTALL:** Banners to be secured into place along 5/16" galvanized steel braided cable using 1/4" zinc plated snap rings and non corrosive stainless steel 3/8" hilti kwik bolts w/ 1-7/8" to 3" embedment;  
SEE PAGES 7-9 FOR FULL INSTALL DETAILS

**QUANTITY:** (1) ONE REQUIRED FOR FRONT ELEVATION

**NOTE:** Customer to provide useable artwork, logos, and color matches prior to production



Paint finish to be satin unless otherwise specified

**E03.1 S/F MESH BANNERS**

Scale: 1/4"=1'-0"

310 square feet



**BANNER:** 12 oz. Mesh banner material (85% material & 15% holes) w/ a reinforced hem

**GRAPHICS:** Digitally printed graphics to match colors shown

**INSTALL:** Banners to be secured into place along 5/16" galvanized steel braided cable using 1/4" zinc plated snap rings and non corrosive stainless steel 3/8" hilti kwik bolts w/ 1-7/8" to 3" embedment; SEE PAGES 7-9 FOR FULL INSTALL DETAILS

**QUANTITY:** (1) ONE REQUIRED FOR FRONT ELEVATION

**NOTE:** Customer to provide useable artwork, logos, and color matches prior to production

**PROVIDED GRAPHIC CROPPED TO FIT REQUESTED PROPORTIONS; CLIENT APPROVAL REQUIRED FOR CROP OR NEW ART TO BE PROVIDED**



**HIGH RESOLUTION GRAPHIC NEEDED FOR PRINT**

**COLOR PALETTE**

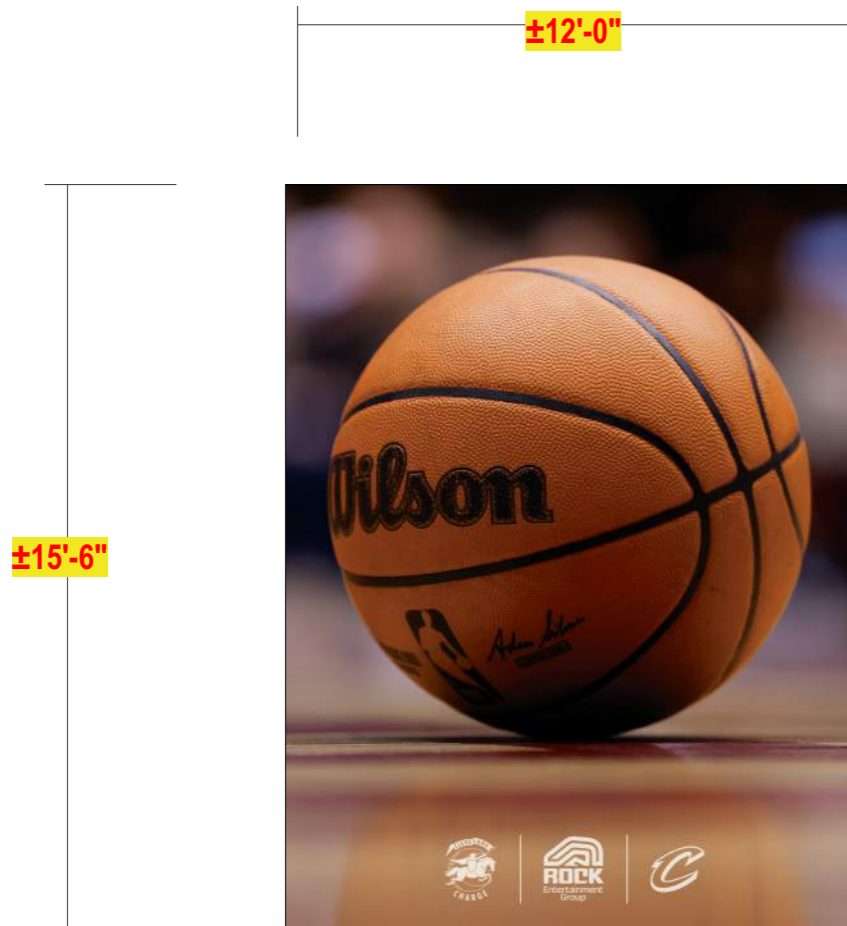
**C M** Full Color Digitally printed graphics  
**K Y**

**E03.2**

**S/F MESH BANNERS**

Scale: 1/4"=1'-0"

310 square feet



**BANNER:** 12 oz. Mesh banner material (85% material & 15% holes) w/ a reinforced hem

**GRAPHICS:** Digitally printed graphics to match colors shown

**INSTALL:** Banners to be secured into place along 5/16" galvanized steel braided cable using 1/4" zinc plated snap rings and non corrosive stainless steel 3/8" hilti kwik bolts w/ 1-7/8" to 3" embedment; SEE PAGES 7-9 FOR FULL INSTALL DETAILS

**QUANTITY:** (1) ONE REQUIRED FOR FRONT ELEVATION

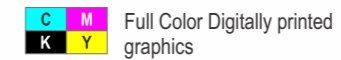
**NOTE:** Customer to provide useable artwork, logos, and color matches prior to production

**PROVIDED GRAPHIC CROPPED TO FIT REQUESTED PROPORTIONS; CLIENT APPROVAL REQUIRED FOR CROP OR NEW ART TO BE PROVIDED**



**HIGH RESOLUTION GRAPHIC NEEDED FOR PRINT**

**COLOR PALETTE**

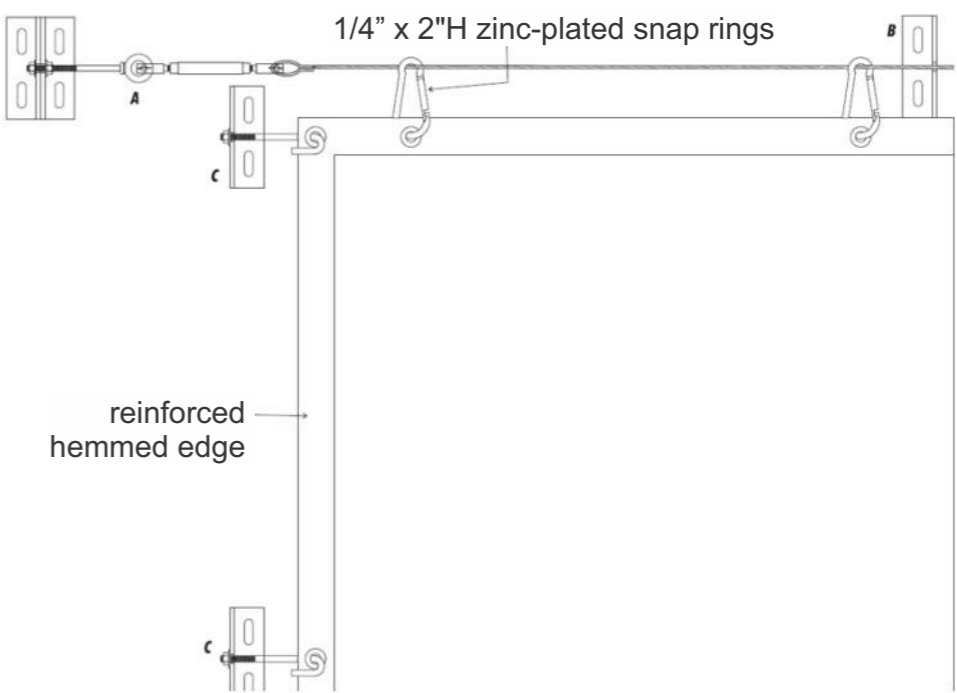
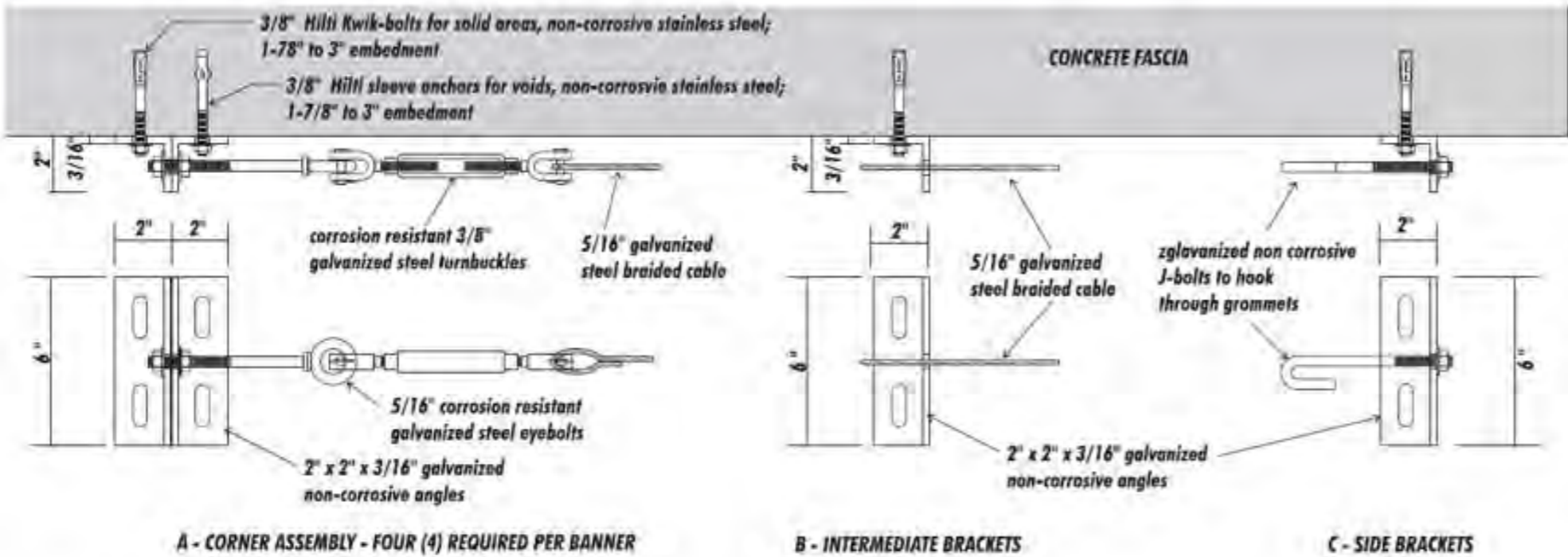


# BANNER DETAILS

Scale: NTS



## RMFH Cable Banner System



SEE FOLLOWING PAGES FOR GROMMET / SNAP RING PLACEMENTS

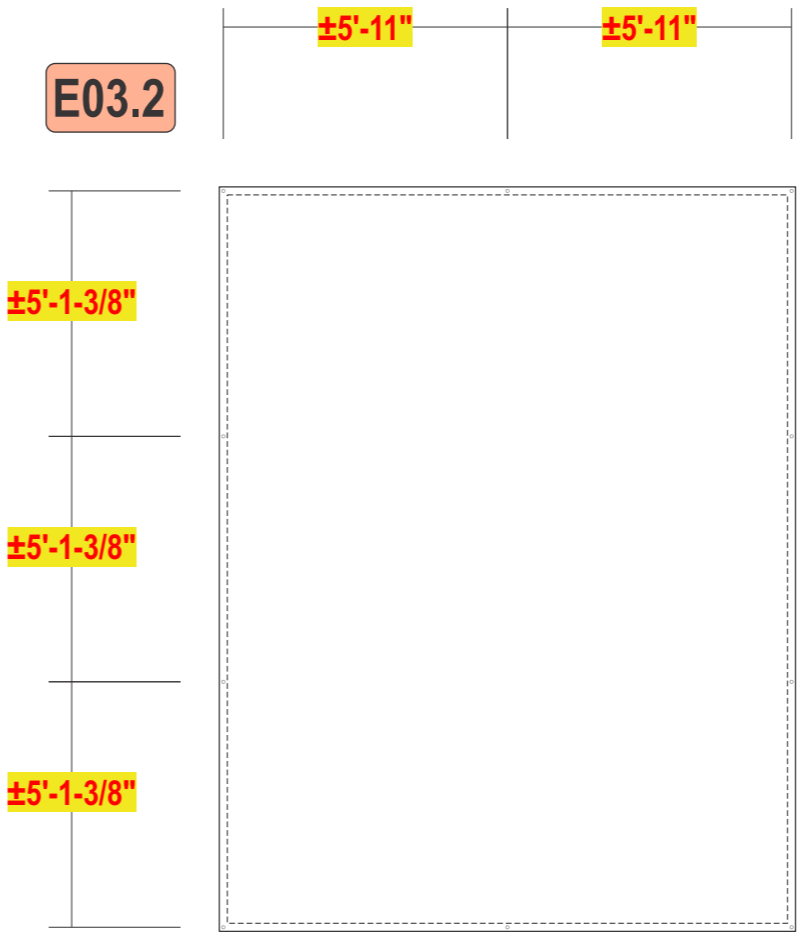
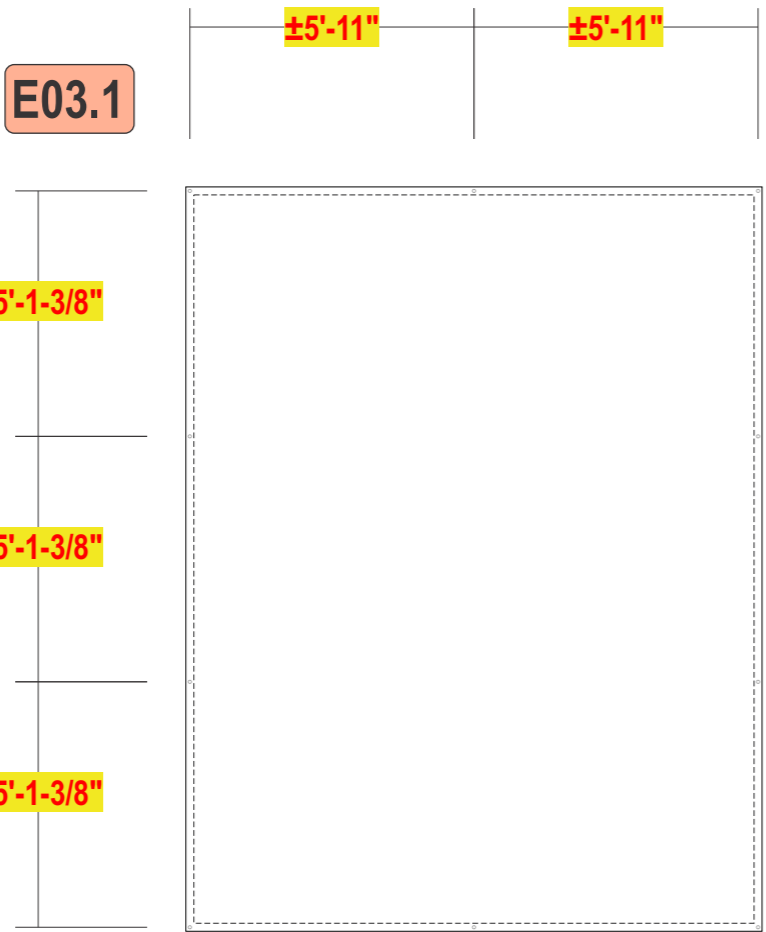


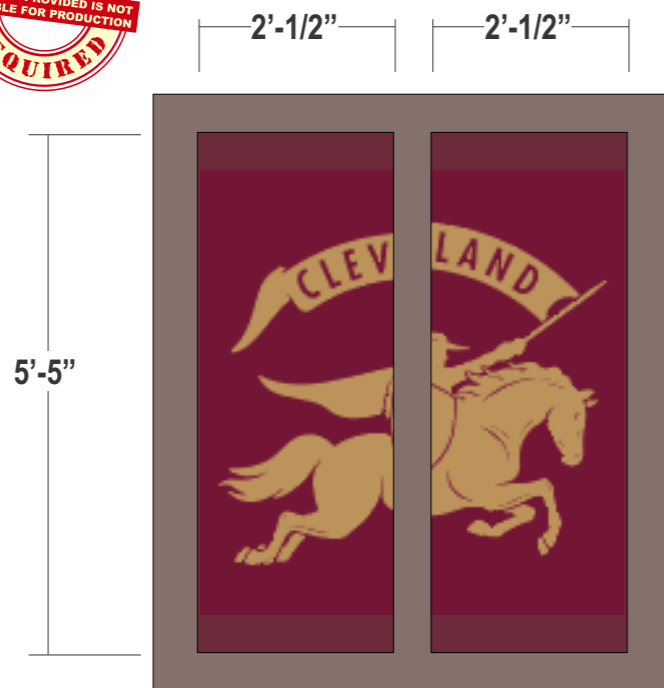
# BANNER DETAILS - GROMMET / RING SPACING

Scale: 1/4"=1'-0"



**SURVEY & APPROVED BANNER DIMENSIONS TO DETERMINE FINAL SPACING/DIMENSIONS**





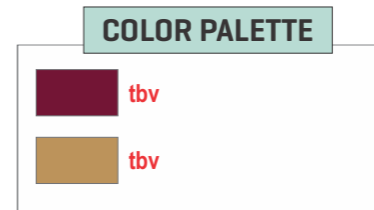
*Prints to be produced w/ 1" bleed all sides*

**MATERIAL:** Digitally printed perforated two way vision vinyl or equivalent

**INSTALL:** First surface applied to outside of windows - **TBV**

**QUANTITY:** (8) EIGHT SETS REQUIRED

**NOTE:** Customer to provide useable artwork, logos, and color matches prior to production



Paint finish to be satin unless otherwise specified

